

LABOUR FORCE, VICTORIA, FEBRUARY 1997

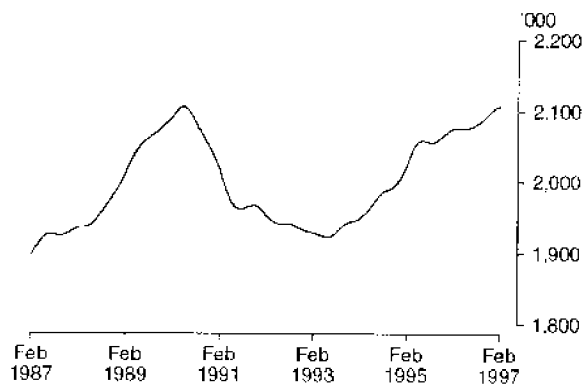
SUMMARY OF FINDINGS

Employment

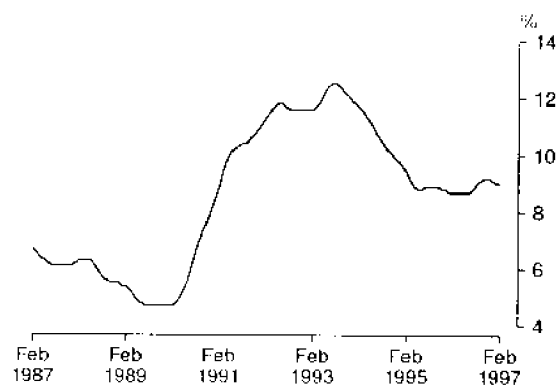
The February 1997 seasonally adjusted estimate of employed persons in Victoria was 2,099,600, a fall of 7,500 since November 1996. Male employment fell by 12,000 to 1,182,800 while female employment rose slightly to 916,800 since November 1996.

Provisional trend estimates of total employment which had been steadily rising since June 1993 continued to rise after slight falls between July and September 1995 and April and May 1996.

EMPLOYED PERSONS: TREND SERIES, VICTORIA



UNEMPLOYMENT RATE: TREND SERIES, VICTORIA



Unemployment

The seasonally adjusted estimate of unemployed persons in Victoria for February 1997 was 208,100, a slight fall since November 1996. The seasonally adjusted estimate of the unemployment rate was 9.0%, a fall of 0.1% since November 1996. Male unemployment rose slightly to 120,100, and female unemployment fell by 5,300 to 88,000 since November 1996.

The provisional trend estimate of the unemployment rate is falling.

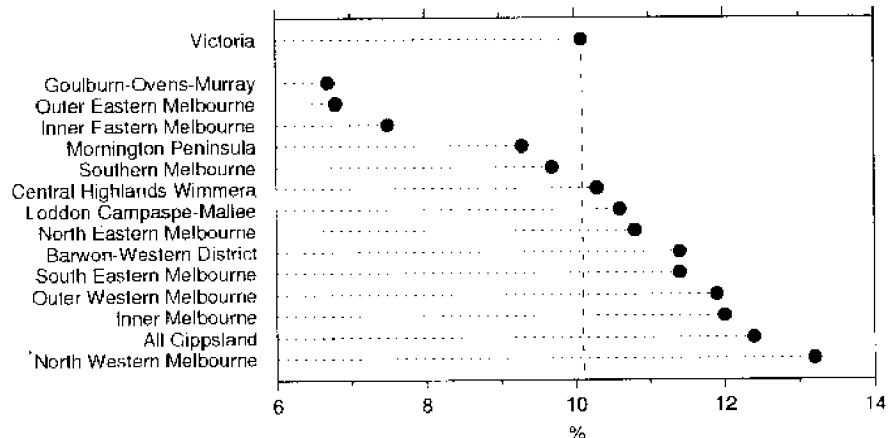
INQUIRIES

- for further information about statistics in this publication and the availability of related unpublished statistics, please contact Rod Smith on (03) 9615 7057 or any ABS State office.
- for information about other ABS statistics and services, please contact Information Services on (03) 9615 7755 or any ABS State office.

Regions

In February 1997, the regions inside the Melbourne Major Statistical Region with the highest unemployment rates (original series) were North Western Melbourne (13.2%) and Inner Melbourne (12.0%). The regions outside the Melbourne Major Statistical Region with the highest unemployment rates were All Gippsland (12.4%) and Barwon-Western District (11.4%). The lowest unemployment rate recorded in any region in February 1997 was 6.7% for Goulburn-Ovens-Murray.

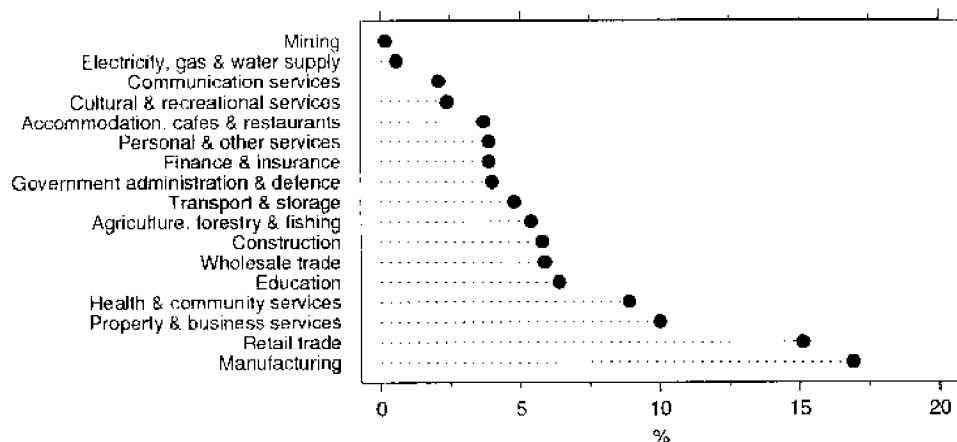
UNEMPLOYMENT RATES: ORIGINAL SERIES, LABOUR FORCE REGIONS
VICTORIA, FEBRUARY 1997



Industry

The two largest industries in Victoria with respect to employment were Manufacturing (352,700 employed) and Retail trade (314,500 employed). Together these industries employed 32% of all employed persons in Victoria in February 1997. Property and business services, and Health and community services were the next largest, with 209,100 and 185,500 employed, respectively.

DISTRIBUTION OF EMPLOYED PERSONS BY INDUSTRY: ORIGINAL SERIES
VICTORIA, FEBRUARY 1997



CONTENTS

		Page
	Summary of findings	I
TABLES		
Civilian population aged 15 years and over	1 Labour force status, time series, original series	4
	2 Labour force status, time series, seasonally adjusted series	5
	3 Labour force status, time series, trend series	6
	4 Labour force status, age, and attendance at an educational institution, February 1997	7
	5 Labour force status and relationship in household, February 1997	8
	6 Labour force status, birthplace, and period of arrival in Australia, February 1997	10
	7 Labour force status by regions, December 1996	11
	8 Labour force status by regions, January 1997	12
	9 Labour force status by regions, February 1997	13
	10 Labour force status and age by regions, February 1997	14
Employed persons	11 Industry and occupation by age, February 1997	18
	12 Industry and occupation by marital status, February 1997	19
	13 Average weekly hours worked by industry and occupation, February 1997	20
	14 Status in employment and average weekly hours worked, February 1997	21
Unemployed persons	15 Industry and occupation of last job, February 1997	21
	16 Duration of unemployment, February 1997	22
INFORMATION		
	Explanatory notes	23
	Glossary	32
	A Standard errors of estimates, Victorian labour force regions, from September 1992	34
	B Standard errors of estimates of monthly movements, Victorian labour force regions, from January 1993	35
	C 25% Relative Standard Error cut off levels, States and Australia, from September 1992	36
	Supplementary and Special Surveys Relating to the Labour Force Statistical Local Area (SLA) Composition of Statistical Regions, Victoria, from September 1992	36
		37
MAPS		
	Victoria, labour force regions, from September 1992	38
	Melbourne, labour force regions, from September 1992	39
GRAPHS		
	Employed persons: trend series, Victoria	1
	Unemployment rate: trend series, Victoria	1
	Unemployment rates: original series, labour force regions, Victoria, February 1997	2
	Distribution of employed persons by Industry: original series, Victoria, February 1997	2

TABLE 1. CIVILIAN POPULATION AGED 15 YEARS AND OVER BY LABOUR FORCE STATUS, VICTORIA: ORIGINAL SERIES

Month	Employed		Unemployed			Labour force ('000)	Not in labour force ('000)	Civilian population 15 years and over ('000)	Unemployment rate (%)	Participation rate (%)
	Full-time ('000)	Total ('000)	Full-time ('000)	Part-time ('000)	Total ('000)					
MALES										
1995 -										
December	1,069.5	1,195.3	101.1	12.9	114.0	1,309.4	436.7	1,746.1	8.7	75.0
1996 -										
January	1,043.8	1,170.6	108.8	12.4	121.2	1,291.7	456.3	1,748.0	9.4	73.9
February	1,050.9	1,176.2	113.5	16.8	130.3	1,306.5	443.4	1,749.9	10.0	74.7
March	1,042.2	1,169.7	101.0	14.5	115.4	1,285.1	466.7	1,751.8	9.0	73.4
April	1,043.5	1,174.3	101.7	15.5	117.2	1,291.6	462.3	1,753.8	9.1	73.6
May	1,057.5	1,187.9	96.9	12.3	109.2	1,297.2	458.6	1,755.8	8.4	73.9
June	1,057.0	1,187.1	88.5	12.7	101.2	1,288.3	469.5	1,757.8	7.9	73.3
July	1,055.2	1,185.0	90.7	13.9	104.5	1,289.5	470.3	1,759.8	8.1	73.3
August	1,045.0	1,182.2	98.5	13.5	112.0	1,294.2	467.7	1,761.9	8.7	73.5
September	1,040.3	1,185.8	107.8	15.6	123.3	1,309.1	454.8	1,763.9	9.4	74.2
October	1,047.5	1,185.9	101.5	15.7	117.2	1,303.1	462.5	1,765.5	9.0	73.8
November	1,049.0	1,192.4	104.1	12.3	116.4	1,308.8	458.4	1,767.2	8.9	74.1
December	1,059.4	1,201.7	103.4	16.4	119.8	1,321.5	447.4	1,768.8	9.1	74.7
1997 -										
January	1,050.9	1,184.8	108.4	16.6	125.0	1,309.8	460.3	1,770.2	9.5	74.0
February	1,049.8	1,180.9	113.2	19.2	132.4	1,313.3	458.2	1,771.5	10.1	74.1
FEMALES										
1995 -										
December	521.3	908.3	53.3	23.3	76.6	984.9	836.9	1,821.7	7.8	54.1
1996 -										
January	501.3	876.0	59.6	27.8	87.4	963.4	860.1	1,823.5	9.1	52.8
February	497.5	882.1	68.9	31.2	100.1	982.2	843.2	1,825.4	10.2	53.8
March	501.5	892.0	56.3	30.7	87.0	979.0	848.2	1,827.2	8.9	53.6
April	507.4	894.3	57.8	32.2	90.1	984.4	845.0	1,829.4	9.1	53.8
May	516.1	904.3	56.3	26.0	82.3	986.6	845.0	1,831.6	8.3	53.9
June	505.0	895.6	48.4	28.2	76.7	972.3	861.5	1,833.8	7.9	53.0
July	527.3	897.7	53.7	28.7	82.4	980.2	856.0	1,836.2	8.4	53.4
August	507.7	893.2	60.8	25.3	86.1	979.3	859.3	1,838.6	8.8	53.3
September	517.9	914.3	62.5	29.0	91.5	1,005.7	835.2	1,841.0	9.1	54.6
October	514.1	906.1	59.8	27.7	87.5	993.6	849.4	1,842.9	8.8	53.9
November	515.4	913.3	62.9	24.9	87.8	1,001.1	843.8	1,844.9	8.8	54.3
December	520.2	918.1	63.6	32.0	95.6	1,013.7	833.1	1,846.8	9.4	54.9
1997 -										
January	511.9	888.2	64.1	24.1	88.2	976.4	871.9	1,848.3	9.0	52.8
February	511.1	903.0	72.0	29.6	101.7	1,004.7	845.0	1,849.7	10.1	54.3
PERSONS										
1995 -										
December	1,590.8	2,103.6	154.4	36.2	190.6	2,294.2	1,273.6	3,567.8	8.3	64.3
1996 -										
January	1,545.1	2,046.6	168.4	40.2	208.6	2,255.2	1,316.4	3,571.6	9.2	63.1
February	1,548.4	2,058.3	182.5	47.9	230.4	2,288.7	1,286.6	3,575.3	10.1	64.0
March	1,543.7	2,061.7	157.3	45.1	202.4	2,264.1	1,314.9	3,579.0	8.9	63.3
April	1,550.9	2,068.7	159.5	47.8	207.3	2,276.0	1,307.2	3,583.2	9.1	63.5
May	1,573.6	2,092.3	153.2	38.3	191.5	2,283.8	1,303.6	3,587.4	8.4	63.7
June	1,562.0	2,082.8	136.9	41.0	177.8	2,260.6	1,331.0	3,591.6	7.9	62.9
July	1,582.5	2,082.7	144.4	42.6	187.0	2,269.7	1,326.3	3,596.0	8.2	63.1
August	1,552.7	2,075.4	159.3	38.8	198.2	2,273.5	1,326.9	3,600.4	8.7	63.1
September	1,558.1	2,100.0	170.3	44.5	214.8	2,314.8	1,290.0	3,604.9	9.3	64.2
October	1,561.6	2,091.9	161.3	43.4	204.7	2,296.6	1,311.8	3,608.5	8.9	63.6
November	1,564.4	2,105.7	167.0	37.2	204.2	2,309.9	1,302.2	3,612.0	8.8	63.9
December	1,579.5	2,119.8	167.0	48.4	215.4	2,335.2	1,280.5	3,615.7	9.2	64.6
1997 -										
January	1,562.8	2,073.0	172.5	40.7	213.2	2,286.2	1,332.2	3,618.4	9.3	63.2
February	1,560.9	2,084.0	185.2	48.9	234.1	2,318.0	1,303.2	3,621.2	10.1	64.0

**TABLE 2. CIVILIAN POPULATION AGED 15 YEARS AND OVER BY
LABOUR FORCE STATUS, VICTORIA: SEASONALLY ADJUSTED SERIES**

<i>Month</i>	<i>Employed ('000)</i>	<i>Unemployed ('000)</i>	<i>Labour force ('000)</i>	<i>Unemployment rate (%)</i>	<i>Participation rate (%)</i>
MALES					
<i>1995 -</i>					
December	1,178.7	114.0	1,292.7	8.8	74.0
<i>1996 -</i>					
January	1,179.0	113.8	1,292.8	8.8	74.0
February	1,178.3	118.3	1,296.6	9.1	74.1
March	1,172.1	113.1	1,285.2	8.8	73.4
April	1,175.3	121.3	1,296.6	9.4	73.9
May	1,188.5	109.2	1,297.7	8.4	73.9
June	1,186.1	106.3	1,292.5	8.2	73.5
July	1,183.8	109.1	1,292.9	8.4	73.5
August	1,188.5	114.6	1,303.0	8.8	74.0
September	1,181.9	120.9	1,302.9	9.3	73.9
October	1,185.5	121.9	1,307.4	9.3	74.1
November	1,194.8	118.5	1,313.3	9.0	74.3
December	1,185.0	120.2	1,305.2	9.2	73.8
<i>1997 -</i>					
January	1,193.5	117.5	1,311.0	9.0	74.1
February	1,182.8	120.1	1,302.9	9.2	73.5
FEMALES					
<i>1995 -</i>					
December	900.3	72.0	972.3	7.4	53.4
<i>1996 -</i>					
January	908.8	85.4	994.2	8.6	54.5
February	895.5	86.7	982.1	8.8	53.8
March	889.0	80.6	969.6	8.3	53.1
April	895.8	87.5	983.4	8.9	53.8
May	899.6	83.6	983.2	8.5	53.7
June	892.7	80.3	973.0	8.3	53.1
July	888.4	88.7	977.1	9.1	53.2
August	896.8	95.0	991.8	9.6	53.9
September	899.6	90.8	990.4	9.2	53.8
October	898.8	94.1	992.9	9.5	53.9
November	912.3	93.3	1,005.6	9.3	54.5
December	910.4	89.8	1,000.2	9.0	54.2
<i>1997 -</i>					
January	921.4	86.4	1,007.8	8.6	54.5
February	916.8	88.0	1,004.8	8.8	54.3
PERSONS					
<i>1995 -</i>					
December	2,079.0	185.9	2,265.0	8.2	63.5
<i>1996 -</i>					
January	2,087.8	199.1	2,286.9	8.7	64.0
February	2,073.8	205.0	2,278.8	9.0	63.7
March	2,061.1	193.7	2,254.8	8.6	63.0
April	2,071.1	208.9	2,280.0	9.2	63.6
May	2,088.1	192.8	2,281.0	8.5	63.6
June	2,078.8	186.6	2,265.5	8.2	63.1
July	2,072.1	197.8	2,269.9	8.7	63.1
August	2,085.3	209.5	2,294.8	9.1	63.7
September	2,081.6	211.7	2,293.3	9.2	63.6
October	2,084.3	216.0	2,300.3	9.4	63.7
November	2,107.1	211.8	2,318.9	9.1	64.2
December	2,095.4	210.0	2,305.4	9.1	63.8
<i>1997 -</i>					
January	2,114.8	203.9	2,318.8	8.8	64.1
February	2,099.6	208.1	2,307.7	9.0	63.7

**TABLE 3. CIVILIAN POPULATION AGED 15 YEARS AND OVER BY
LABOUR FORCE STATUS, VICTORIA: TREND SERIES**

<i>Month</i>	<i>Employed (^{'000})</i>	<i>Unemployed (^{'000})</i>	<i>Labour force (^{'000})</i>	<i>Unemployment rate (%)</i>	<i>Participation rate (%)</i>
MALES					
<i>1995 -</i>					
December	1,174.4	114.7	1,289.1	8.9	73.8
<i>1996 -</i>					
January	1,176.1	115.0	1,291.0	8.9	73.9
February	1,177.3	115.1	1,292.5	8.9	73.9
March	1,178.6	114.6	1,293.2	8.9	73.8
April	1,180.2	113.4	1,293.5	8.8	73.8
May	1,181.9	112.0	1,293.9	8.7	73.7
June	1,183.8	111.4	1,295.2	8.6	73.7
July	1,185.3	112.3	1,297.5	8.7	73.7
August	1,186.3	114.3	1,300.6	8.8	73.8
September	1,186.9	116.8	1,303.8	9.0	73.9
October	1,187.4	118.9	1,306.3	9.1	74.0
November	1,188.1	119.9	1,308.0	9.2	74.0
December	1,188.5	120.0	1,308.5	9.2	74.0
<i>1997 -</i>					
January	1,188.5	119.9	1,308.5	9.2	73.9
February	1,188.1	119.5	1,307.6	9.1	73.8
FEMALES					
<i>1995 -</i>					
December	894.6	83.7	978.3	8.6	53.7
<i>1996 -</i>					
January	897.2	83.2	980.4	8.5	53.8
February	898.3	82.8	981.1	8.4	53.7
March	897.4	82.9	980.3	8.5	53.7
April	895.4	83.7	979.0	8.5	53.5
May	893.5	84.8	978.3	8.7	53.4
June	893.1	86.2	979.3	8.8	53.4
July	893.8	88.2	982.0	9.0	53.5
August	895.7	90.5	986.2	9.2	53.6
September	898.8	92.1	990.9	9.3	53.8
October	903.2	92.4	995.6	9.3	54.0
November	908.0	91.7	999.7	9.2	54.2
December	912.5	90.5	1,002.9	9.0	54.3
<i>1997 -</i>					
January	916.3	89.1	1,005.3	8.9	54.4
February	918.9	87.8	1,006.7	8.7	54.4
PERSONS					
<i>1995 -</i>					
December	2,069.0	198.4	2,267.4	8.8	63.6
<i>1996 -</i>					
January	2,073.3	198.1	2,271.4	8.7	63.6
February	2,075.6	197.9	2,273.5	8.7	63.6
March	2,076.0	197.5	2,273.5	8.7	63.5
April	2,075.5	197.1	2,272.6	8.7	63.4
May	2,075.4	196.8	2,272.3	8.7	63.3
June	2,076.9	197.6	2,274.5	8.7	63.3
July	2,079.0	200.5	2,279.5	8.8	63.4
August	2,082.0	204.8	2,286.8	9.0	63.5
September	2,085.7	208.9	2,294.6	9.1	63.7
October	2,090.6	211.3	2,301.9	9.2	63.8
November	2,096.1	211.6	2,307.7	9.2	63.9
December	2,101.0	210.5	2,311.5	9.1	63.9
<i>1997 -</i>					
January	2,104.8	209.0	2,313.8	9.0	63.9
February	2,107.0	207.3	2,314.3	9.0	63.9

TABLE 4. CIVILIAN POPULATION AGED 15 YEARS AND OVER BY LABOUR FORCE STATUS, AGE, AND ATTENDANCE AT AN EDUCATIONAL INSTITUTION, VICTORIA, FEBRUARY 1997

<i>Particulars</i>	<i>Employed</i>			<i>Unemp- loyed ('000)</i>	<i>Labour force ('000)</i>	<i>Not in labour force ('000)</i>	<i>Unemp- loyment rate (%)</i>	<i>Partici- pation rate (%)</i>
	<i>Full- time ('000)</i>	<i>Part- time ('000)</i>	<i>Total ('000)</i>					
Age (years) — 15 - 19								
15 - 17	10.3	50.0	60.2	23.4	83.6	103.2	28.0	44.8
18 - 19	35.3	44.1	79.4	18.5	97.9	30.1	18.9	76.5
Attending school	*0.3	43.8	44.1	17.8	61.9	101.6	28.8	37.9
Not attending school -								
Left before 1995	17.6	9.2	26.8	7.4	34.2	5.2	21.7	86.9
1995	14.0	20.9	34.9	7.2	42.2	11.9	17.2	77.9
Left from 1996 to survey date	13.7	20.1	33.8	9.4	43.2	14.5	21.8	74.9
Total aged 15 - 19 years	45.6	94.0	139.6	41.9	181.5	133.2	23.1	57.7
Age (years) -								
20 - 24	183.8	64.3	248.2	42.5	290.7	55.2	14.6	84.0
25 - 34	439.0	98.2	537.2	52.0	589.2	129.8	8.8	81.9
35 - 44	414.7	117.1	531.8	43.6	575.4	119.5	7.6	82.8
45 - 54	332.6	89.5	422.2	37.0	459.2	122.9	8.1	78.9
55 and over	145.2	59.8	205.0	17.1	222.1	742.5	7.7	23.0
Total all ages	1,560.9	523.0	2,084.0	234.1	2,318.0	1,303.2	10.1	64.0
Attending tertiary educational institution full-time								
Age (years) -								
15 - 19	7.1	33.2	40.3	7.4	47.7	18.8	15.4	71.7
20 - 24	9.1	24.6	33.7	8.5	42.2	25.0	20.2	62.8

TABLE 5. CIVILIAN POPULATION AGED 15 YEARS AND OVER BY LABOUR FORCE STATUS AND RELATIONSHIP IN HOUSEHOLD, VICTORIA, FEBRUARY 1997

Relationship in household	Employed			Unemp- loyed ('000)	Labour force ('000)	Not in labour force ('000)	Civilian popu- lation 15 years and over ('000)	Unemp- loyment rate (%)	Partici- pation rate (%)
	Full- time ('000)	Part- time ('000)	Total ('000)						
MALES									
Family member	861.5	107.3	968.7	105.1	1,073.8	356.8	1,430.6	9.8	75.1
Husband or wife	688.8	44.8	733.6	49.2	782.7	248.6	1,031.3	6.3	75.9
With children under 15	371.7	13.7	385.4	25.5	410.9	23.0	433.9	6.2	94.7
Without children under 15	317.1	31.1	348.2	23.7	371.9	225.5	597.4	6.4	62.2
With dependants	439.7	18.3	458.0	27.6	485.6	31.7	517.3	5.7	93.9
Without dependants	249.0	26.5	275.6	21.6	297.2	216.9	514.0	7.3	57.8
Lone parent	15.7	*1.1	16.8	*1.3	18.1	11.2	29.3	*7.2	61.8
With children under 15	5.6	*1.1	6.7	*0.5	7.2	*3.0	10.2	*7.0	70.5
With dependent students but without children under 15	*4.5	*0.0	*4.5	*0.3	4.8	*0.8	5.6	*5.5	85.7
Without dependants	5.6	*0.0	5.6	*0.5	6.1	7.4	13.5	*8.6	45.3
Dependent student(a)	7.5	39.9	47.5	14.2	61.6	64.9	126.6	23.0	48.7
Non-dependent child(b)	130.1	19.0	149.1	35.9	184.9	21.6	206.5	19.4	89.6
Other family person	19.4	*2.4	21.8	*4.6	26.4	10.5	36.9	17.4	71.6
Non-family member	157.8	18.2	176.0	23.4	199.4	66.8	266.2	11.7	74.9
Lone person	82.0	9.9	91.9	11.5	103.4	50.8	154.2	11.1	67.1
Not living alone	75.8	8.3	84.1	11.9	95.9	16.0	112.0	12.4	85.7
Total	1,019.3	125.4	1,144.7	128.5	1,273.2	423.6	1,696.8	10.1	75.0
Not family coded(c)	30.5	5.7	36.2	*3.9	40.2	34.6	74.8	*9.8	53.7
FEMALES									
Family member	387.6	352.4	740.0	84.0	824.0	630.2	1,454.3	10.2	56.7
Husband or wife	273.9	246.0	519.9	37.2	557.2	462.0	1,019.2	6.7	54.7
With children under 15	97.8	146.1	243.8	20.4	264.2	162.8	427.0	7.7	61.9
Without children under 15	176.1	99.9	276.1	16.9	292.9	299.2	592.2	5.8	49.5
With dependants	129.3	172.9	302.2	24.1	326.2	181.7	508.0	7.4	64.2
Without dependants	144.6	73.1	217.8	13.2	230.9	280.3	511.2	5.7	45.2
Lone parent	27.5	29.6	57.2	15.0	72.2	71.8	144.0	20.8	50.1
With children under 15	13.9	21.3	35.3	9.4	44.7	40.1	84.8	21.1	52.7
With dependent students but without children under 15	5.0	*3.5	8.5	*2.5	10.9	4.6	15.6	*22.4	70.2
Without dependants	8.6	4.8	13.4	*3.1	16.6	27.1	43.7	*19.0	37.9
Dependent student(a)	*4.2	50.6	54.8	12.6	67.3	59.3	126.7	18.6	53.2
Non-dependent child(b)	70.9	22.9	93.8	15.7	109.4	13.2	122.6	14.3	89.2
Other family person	11.2	*3.3	14.4	*3.5	17.9	23.9	41.8	*19.5	42.9
Non-family member	104.9	29.4	134.3	14.7	149.0	160.1	309.1	9.8	48.2
Lone person	52.0	14.6	66.6	8.8	75.4	142.8	218.3	11.7	34.6
Not living alone	52.9	14.7	67.7	5.9	73.5	17.3	90.8	8.0	81.0
Total	492.5	381.8	874.4	98.6	973.0	790.4	1,763.3	10.1	55.2
Not family coded(c)	18.6	10.1	28.7	*3.0	31.7	54.6	86.4	*9.6	36.7

TABLE 5. CIVILIAN POPULATION AGED 15 YEARS AND OVER BY LABOUR FORCE STATUS AND RELATIONSHIP IN HOUSEHOLD, VICTORIA, FEBRUARY 1997—continued

Relationship in household	Employed			Unemp- loyed (<i>'000</i>)	Labour force (<i>'000</i>)	Not in labour force (<i>'000</i>)	Civilian popu- lation 15 years and over (<i>'000</i>)	Unemp- loyment rate (%)	Partici- pation rate (%)
	Full- time (<i>'000</i>)	Part- time (<i>'000</i>)	Total (<i>'000</i>)						
PERSONS									
Family member	1,249.1	459.7	1,708.8	189.1	1,897.8	987.0	2,884.9	10.0	65.8
Husband or wife	962.7	290.8	1,253.5	86.4	1,339.9	710.6	2,050.5	6.4	65.3
With children under 15	469.4	159.8	629.3	45.8	675.1	185.8	861.0	6.8	78.4
Without children under 15	493.2	131.0	624.2	40.6	664.8	524.8	1,189.6	6.1	55.9
With dependants	569.0	191.2	760.2	51.6	811.8	213.5	1,025.3	6.4	79.2
Without dependants	393.7	99.7	493.3	34.8	528.1	497.2	1,025.3	6.6	51.5
Lone parent	43.3	30.7	74.0	16.3	90.3	83.0	173.2	18.1	52.1
With children under 15	19.6	22.4	42.0	9.9	51.9	43.1	95.0	19.1	54.6
With dependent students but without children under 15	9.5	*3.5	13.0	*2.7	15.7	5.4	21.1	*17.3	74.3
Without dependants	14.2	4.8	19.0	*3.7	22.7	34.5	57.1	*16.2	39.7
Dependent student(a)	11.7	90.6	102.2	26.7	129.0	124.3	253.2	20.7	50.9
Non-dependent child(b)	200.9	41.9	242.8	51.5	294.3	34.8	329.1	17.5	89.4
Other family person	30.6	5.7	36.2	8.1	44.3	34.4	78.7	18.2	56.3
Non-family member	262.7	47.6	310.3	38.0	348.3	226.9	575.2	10.9	60.6
Lone person	134.0	24.5	158.6	20.3	178.8	193.6	372.4	11.3	48.0
Not living alone	128.7	23.0	151.7	17.7	169.5	33.3	202.8	10.5	83.6
Total	1,511.8	507.3	2,019.1	227.1	2,246.2	1,213.9	3,460.1	10.1	64.9
Not family coded(c)	49.1	15.8	64.9	7.0	71.9	89.2	161.1	9.7	44.6

(a) Excludes persons aged 20-24 attending school. Also excludes sons or daughters aged 15-24 who are classified as husbands, wives or lone parents. (b) Aged 15 and over. (c) Includes usual residents of a household where relationship was not determined, visitors to private dwellings, and persons enumerated in non-private dwellings.

TABLE 6. CIVILIAN POPULATION AGED 15 YEARS AND OVER BY LABOUR FORCE STATUS, BIRTHPLACE, AND PERIOD OF ARRIVAL IN AUSTRALIA, VICTORIA, FEBRUARY 1997

<i>Birthplace particulars</i>	<i>Employed</i>			<i>Unemp- loyed ('000)</i>	<i>Labour force ('000)</i>	<i>Not in labour force ('000)</i>	<i>Unemp- loyment rate (%)</i>	<i>Partici- pation rate (a) (%)</i>
	<i>Full- time ('000)</i>	<i>Part- time ('000)</i>	<i>Total ('000)</i>					
Born in Australia	1,146.5	425.0	1,571.6	161.6	1,733.1	820.6	9.3	67.9
Born outside Australia —								
Africa	17.4	*3.0	20.4	*3.5	23.9	8.0	*14.5	74.9
America	13.3	*3.8	17.0	*4.3	21.3	7.5	*20.0	73.9
Southeast Asia	48.0	8.0	56.0	14.5	70.5	45.0	20.6	61.0
Malaysia	11.4	*2.4	13.7	*1.0	14.8	6.3	*7.0	70.0
Viet Nam	20.1	*1.8	21.9	9.5	31.4	20.6	30.3	60.4
Other Southeast Asia	16.6	*3.8	20.3	*4.0	24.3	18.1	*16.3	57.3
Northeast Asia	15.9	*2.7	18.6	*2.3	20.9	21.3	*11.1	49.5
Southern Asia	22.2	*3.1	25.3	*2.9	28.2	17.2	*10.2	62.1
The Middle East and North Africa	20.4	6.0	26.4	8.2	34.6	24.2	23.8	58.8
Europe —	256.7	65.6	322.3	34.4	356.8	304.4	9.7	54.0
Germany	11.1	*3.7	14.8	*1.6	16.5	13.6	*10.0	54.9
Greece	23.5	5.2	28.7	*3.7	32.5	30.2	*11.4	51.8
Italy	31.7	7.5	39.2	*3.5	42.7	59.3	*8.2	41.9
Malta	7.7	*2.6	10.3	*0.8	11.1	9.7	*7.2	53.4
Netherlands	12.4	*3.6	16.0	*0.3	16.3	12.6	*1.6	56.4
Poland	7.8	*1.8	9.6	*1.1	10.7	15.4	*9.9	41.0
UK and Ireland	100.2	27.0	127.2	12.7	139.9	97.2	9.1	59.0
Former Yugoslav Republics	32.1	5.3	37.3	7.3	44.6	30.8	16.4	59.1
Other Europe	30.3	8.8	39.1	*3.5	42.6	35.6	*8.2	54.5
Oceania —	20.5	5.8	26.4	*2.4	28.7	11.6	*8.3	71.2
New Zealand	15.7	5.8	21.6	*1.6	23.2	8.1	*6.9	74.1
Other Oceania	4.8	*0.0	4.8	*0.8	5.6	*3.5	*14.1	61.3
Main English speaking countries (b)	128.0	36.8	164.8	15.3	180.2	111.4	8.5	61.8
Other than main English speaking countries	286.4	61.2	347.6	57.2	404.8	328.0	14.1	55.2
Period of arrival —								
Before 1961	67.5	21.5	89.0	6.5	95.6	173.9	6.8	35.5
1961 - 1965	39.0	12.2	51.1	7.0	58.1	52.9	12.0	52.4
1966 - 1970	64.7	14.2	78.9	7.5	86.4	49.2	8.7	63.7
1971 - 1975	53.0	12.8	65.8	7.7	73.5	28.8	10.4	71.9
1976 - 1980	36.0	8.5	44.5	5.8	50.3	18.4	11.5	73.2
1981 - 1985	47.1	9.2	56.3	8.8	65.1	24.4	13.5	72.7
1986 - 1990	66.5	13.7	80.1	14.7	94.8	39.1	15.5	70.8
1991 - 1995	34.7	5.0	39.7	11.0	50.6	35.3	21.6	58.9
1996 to survey date	5.8	*1.1	6.9	*3.6	10.6	17.3	*34.4	37.9
Total overseas born	414.4	98.0	512.4	72.5	584.9	439.4	12.4	57.1

(a) Because it is not practicable to ascertain the birthplace of persons in institutions (who are classified as 'not in the labour force'), labour force participation rates for persons classified by birthplace are calculated by using population estimates which exclude those in institutions. (b) Comprises Canada, New Zealand, South Africa, United Kingdom and Ireland, United States of America.

**TABLE 7. CIVILIAN POPULATION AGED 15 YEARS AND OVER BY LABOUR FORCE STATUS,
VICTORIAN REGIONS, DECEMBER 1996**

Region	Employed			Unemp- loyed ('000)	Labour force ('000)	Not in labour force ('000)	Unemp- loyment rate (%)	Partici- pation rate (%)
	Full- time ('000)	Part- time ('000)	Total ('000)					
MALLES								
Melbourne MSR-	781.0	97.6	878.6	88.2	966.9	307.1	9.1	75.9
North Western Melbourne	54.2	7.4	61.5	7.6	69.1	28.0	11.0	71.1
Outer Western Melbourne	116.9	12.9	129.8	17.6	147.3	53.3	11.9	73.5
Inner Melbourne	49.6	6.9	56.5	6.9	63.3	22.0	10.8	74.2
North Eastern Melbourne	104.0	10.8	114.8	14.4	129.1	39.1	11.1	76.7
Inner Eastern Melbourne	105.3	14.4	119.8	10.8	130.6	45.5	8.3	74.1
Southern Melbourne	88.7	13.2	101.9	8.9	110.8	35.8	8.1	75.6
Outer Eastern Melbourne	119.6	15.1	134.6	10.8	145.5	30.5	7.5	82.7
South Eastern Melbourne	95.9	10.6	106.5	7.5	114.1	24.7	6.6	82.2
Mornington Peninsula	46.9	6.3	53.2	3.8	57.0	28.1	6.6	67.0
Balance of Victoria MSR-	278.4	44.7	323.1	31.5	354.6	140.3	8.9	71.7
Barwon-Western District	78.8	11.3	90.0	9.7	99.7	37.0	9.7	72.9
Central Highlands-Wimmera	41.9	6.2	48.2	5.6	53.7	25.9	10.3	67.5
Loddon-Campaspe-Mallee	48.2	7.0	55.1	5.6	60.8	28.8	9.3	67.8
Goulburn-Ovens-Murray	65.4	10.7	76.1	4.5	80.6	20.7	5.6	79.6
All Gippsland	44.1	9.5	53.6	6.2	59.8	27.8	10.3	68.2
Total	1,059.4	142.3	1,201.7	119.8	1,321.5	447.4	9.1	74.7
FEMALES								
Melbourne MSR-	398.7	277.1	675.8	72.4	748.2	589.4	9.7	55.9
North Western Melbourne	35.9	16.9	52.8	7.1	60.0	47.7	11.9	55.7
Outer Western Melbourne	57.0	37.3	94.3	12.1	106.3	100.3	11.3	51.4
Inner Melbourne	38.3	13.1	51.4	4.9	56.3	35.9	8.8	61.1
North Eastern Melbourne	48.0	33.7	81.7	12.4	94.1	86.7	13.2	52.1
Inner Eastern Melbourne	52.5	40.3	92.9	5.6	98.5	73.3	5.7	57.3
Southern Melbourne	43.7	34.1	77.8	6.4	84.1	73.7	7.5	53.3
Outer Eastern Melbourne	59.3	53.9	113.2	5.5	118.7	69.0	4.6	63.2
South Eastern Melbourne	44.3	30.3	74.6	13.1	87.6	52.5	14.9	62.5
Mornington Peninsula	19.8	17.4	37.2	5.3	42.5	50.3	12.5	45.8
Balance of Victoria MSR-	121.5	120.8	242.3	23.2	265.5	243.8	8.7	52.1
Barwon-Western District	31.3	38.0	69.3	8.7	78.0	63.4	11.2	55.1
Central Highlands-Wimmera	21.6	19.3	40.9	*4.1	45.0	40.1	*9.1	52.8
Loddon-Campaspe-Mallee	20.3	19.7	40.1	*3.0	43.1	54.6	*7.0	44.1
Goulburn-Ovens-Murray	29.3	25.4	54.7	*3.5	58.1	40.6	*5.9	58.9
All Gippsland	18.9	18.4	37.4	*3.9	41.3	45.0	*9.5	47.9
Total	520.2	397.9	918.1	95.6	1,013.7	833.1	9.4	54.9
PERSONS								
Melbourne MSR-	1,179.7	374.7	1,554.4	160.6	1,715.0	896.4	9.4	65.7
North Western Melbourne	90.1	24.3	114.4	14.7	129.1	75.8	11.4	63.0
Outer Western Melbourne	173.8	50.2	224.1	29.6	253.7	153.6	11.7	62.3
Inner Melbourne	87.9	19.9	107.8	11.8	119.6	57.9	9.9	67.4
North Eastern Melbourne	151.9	44.5	196.5	26.8	223.2	125.8	12.0	64.0
Inner Eastern Melbourne	157.9	54.8	212.6	16.4	229.1	118.8	7.2	65.8
Southern Melbourne	132.3	47.4	179.7	15.3	195.0	109.5	7.8	64.0
Outer Eastern Melbourne	178.8	69.0	247.8	16.4	264.2	99.5	6.2	72.6
South Eastern Melbourne	140.2	40.9	181.1	20.6	201.7	77.2	10.2	72.3
Mornington Peninsula	66.6	23.7	90.4	9.1	99.4	78.5	9.1	55.9
Balance of Victoria MSR-	399.9	165.5	565.4	54.8	620.1	384.1	8.8	61.8
Barwon-Western District	110.1	49.2	159.3	18.4	177.7	100.5	10.3	63.9
Central Highlands-Wimmera	63.5	25.5	89.1	9.6	98.7	66.0	9.8	59.9
Loddon-Campaspe-Mallee	68.5	26.7	95.2	8.7	103.9	83.4	8.4	55.5
Goulburn-Ovens-Murray	94.7	36.1	130.8	7.9	138.7	61.2	5.7	69.4
All Gippsland	63.1	27.9	91.0	10.1	101.1	72.9	10.0	58.1
Total	1,579.5	540.3	2,119.8	215.4	2,335.2	1,280.5	9.2	64.6

**TABLE 8. CIVILIAN POPULATION AGED 15 YEARS AND OVER BY LABOUR FORCE STATUS,
VICTORIAN REGIONS, JANUARY 1997**

Region	Employed			Unemp- loyed ('000)	Labour force ('000)	Not in labour force ('000)	Unemp- loyment rate (%)	Partici- pation rate (%)
	Full- time ('000)	Part- time ('000)	Total ('000)					
MALES								
Melbourne MSR-	769.5	90.6	860.1	91.1	951.2	323.7	9.6	74.6
North Western Melbourne	56.2	5.0	61.2	9.0	70.2	27.0	12.9	72.3
Outer Western Melbourne	118.4	11.2	129.6	18.1	147.7	54.2	12.2	73.1
Inner Melbourne	48.4	8.2	56.7	6.5	63.1	24.9	10.2	71.7
North Eastern Melbourne	103.7	8.7	112.4	12.6	125.0	43.0	10.1	74.4
Inner Eastern Melbourne	103.7	15.3	119.0	10.3	129.4	47.7	8.0	73.1
Southern Melbourne	86.6	12.9	99.4	9.9	109.4	36.2	9.1	75.1
Outer Eastern Melbourne	114.9	11.7	126.6	11.0	137.6	38.1	8.0	78.3
South Eastern Melbourne	91.0	9.3	100.4	9.9	110.3	25.0	9.0	81.5
Mornington Peninsula	46.5	8.2	54.7	3.8	58.6	27.7	6.6	67.9
Balance of Victoria MSR-	281.5	43.3	324.7	33.9	358.6	136.6	9.5	72.4
Barwon-Western District	81.3	8.7	90.0	9.6	99.6	34.9	9.6	74.0
Central Highlands-Wimmera	42.3	10.0	52.4	5.7	58.1	24.7	9.8	70.2
Loddon-Campaspe-Mallee	46.5	5.7	52.2	7.5	59.8	29.3	12.6	67.1
Goulburn-Ovens-Murray	68.1	11.4	79.5	4.3	83.8	20.8	5.1	80.1
All Gippsland	43.2	7.4	50.6	6.8	57.4	26.8	11.9	68.1
Total	1,050.9	133.9	1,184.8	125.0	1,309.8	460.3	9.5	74.0
FEMALES								
Melbourne MSR-	395.3	259.9	655.2	66.2	721.4	617.3	9.2	53.9
North Western Melbourne	37.0	17.7	54.6	7.2	61.8	49.3	11.7	55.6
Outer Western Melbourne	61.2	34.0	95.2	12.3	107.4	97.5	11.4	52.4
Inner Melbourne	42.3	12.7	55.0	5.6	60.5	40.4	9.2	59.9
North Eastern Melbourne	46.9	34.2	81.1	8.9	90.0	91.8	9.9	49.5
Inner Eastern Melbourne	53.6	40.5	94.1	6.0	100.1	76.2	6.0	56.8
Southern Melbourne	40.3	27.1	67.4	6.3	73.7	78.1	8.6	48.5
Outer Eastern Melbourne	56.5	43.3	99.9	6.2	106.1	73.5	5.9	59.1
South Eastern Melbourne	40.1	29.6	69.7	8.9	78.6	61.3	11.4	56.2
Mornington Peninsula	17.5	20.9	38.3	4.7	43.0	49.3	10.9	46.6
Balance of Victoria MSR-	116.6	116.4	233.0	22.0	255.0	254.6	8.6	50.0
Barwon-Western District	31.2	32.0	63.2	7.3	70.5	65.8	10.4	51.7
Central Highlands-Wimmera	17.3	21.9	39.2	*2.6	41.9	41.7	*6.3	50.1
Loddon-Campaspe-Mallee	18.4	20.0	38.3	*3.0	41.4	59.4	*7.3	41.1
Goulburn-Ovens-Murray	31.5	23.2	54.8	4.5	59.2	42.5	7.6	58.2
All Gippsland	18.1	19.3	37.5	*4.6	42.0	45.2	*10.8	48.2
Total	511.9	376.2	888.2	88.2	976.4	871.9	9.0	52.8
PERSONS								
Melbourne MSR-	1,164.8	350.5	1,515.3	157.3	1,672.6	941.1	9.4	64.0
North Western Melbourne	93.2	22.7	115.8	16.2	132.1	76.3	12.3	63.4
Outer Western Melbourne	179.6	45.2	224.7	30.4	255.1	151.7	11.9	62.7
Inner Melbourne	90.7	20.9	111.6	12.0	123.6	65.3	9.7	65.4
North Eastern Melbourne	150.6	42.9	193.5	21.6	215.1	134.9	10.0	61.5
Inner Eastern Melbourne	157.3	55.8	213.2	16.3	229.5	123.8	7.1	64.9
Southern Melbourne	126.8	40.0	166.8	16.2	183.0	114.3	8.9	61.6
Outer Eastern Melbourne	171.4	55.0	226.5	17.2	243.7	111.5	7.1	68.6
South Eastern Melbourne	131.1	38.9	170.1	18.8	188.9	86.3	10.0	68.6
Mornington Peninsula	64.0	29.1	93.1	8.5	101.6	77.0	8.4	56.9
Balance of Victoria MSR-	398.1	159.6	557.7	55.9	613.6	391.2	9.1	61.1
Barwon-Western District	112.5	40.7	153.2	16.9	170.1	100.7	9.9	62.8
Central Highlands-Wimmera	59.7	31.9	91.6	8.3	99.9	66.4	8.3	60.1
Loddon-Campaspe-Mallee	64.9	25.7	90.5	10.6	101.1	88.7	10.5	53.3
Goulburn-Ovens-Murray	99.6	34.6	134.3	8.7	143.0	63.4	6.1	69.3
All Gippsland	61.3	26.7	88.0	11.4	99.4	72.0	11.4	58.0
Total	1,562.8	510.1	2,073.0	213.2	2,286.2	1,332.2	9.3	63.2

**TABLE 9. CIVILIAN POPULATION AGED 15 YEARS AND OVER BY LABOUR FORCE STATUS,
VICTORIAN REGIONS, FEBRUARY 1997**

Region	Employed			Unemp- loyed (^{'000})	Labour force (^{'000})	Not in labour force (^{'000})	Unemp- loyment rate (%)	Partici- pation rate (%)
	Full- time (^{'000})	Part- time (^{'000})	Total (^{'000})					
MALES								
Melbourne MSR-	771.6	89.1	860.7	94.9	955.6	320.4	9.9	74.9
North Western Melbourne	55.4	8.5	63.9	8.8	72.7	26.9	12.1	73.0
Outer Western Melbourne	117.3	9.6	126.9	17.6	144.6	53.0	12.2	73.2
Inner Melbourne	53.9	5.7	59.6	8.0	67.6	26.0	11.8	72.2
North Eastern Melbourne	97.9	10.0	107.9	13.5	121.5	40.1	11.2	75.2
Inner Eastern Melbourne	99.8	15.1	114.9	10.2	125.1	46.9	8.2	72.7
Southern Melbourne	84.1	14.8	98.8	10.1	109.0	32.9	9.3	76.8
Outer Eastern Melbourne	118.7	11.2	129.9	10.6	140.5	38.0	7.6	78.7
South Eastern Melbourne	96.7	6.9	103.5	11.2	114.7	28.3	9.8	80.2
Mornington Peninsula	47.9	7.4	55.3	4.7	60.0	28.2	7.9	68.0
Balance of Victoria MSR-	278.2	42.0	320.2	37.5	357.7	137.8	10.5	72.2
Barwon-Western District	75.5	7.2	82.7	11.0	93.7	36.6	11.7	71.9
Central Highlands-Wimmera	43.2	7.1	50.3	6.0	56.4	23.6	10.7	70.5
Loddon-Campaspe-Mallee	44.6	8.2	52.8	7.2	60.0	28.8	12.1	67.5
Goulburn-Ovens-Murray	65.2	10.5	75.7	5.4	81.1	21.1	6.7	79.4
All Gippsland	49.6	9.1	58.7	7.8	66.6	27.7	11.7	70.6
Total	1,049.8	131.1	1,180.9	132.4	1,313.3	458.2	10.1	74.1
FEMALES								
Melbourne MSR-	390.9	277.4	668.3	76.0	744.3	595.5	10.2	55.6
North Western Melbourne	32.4	16.6	49.0	8.4	57.3	48.4	14.6	54.2
Outer Western Melbourne	57.2	38.7	95.9	12.3	108.2	95.1	11.4	53.2
Inner Melbourne	41.2	14.0	55.2	7.8	63.0	39.9	12.3	61.2
North Eastern Melbourne	50.2	35.8	86.0	9.9	95.9	83.9	10.4	53.3
Inner Eastern Melbourne	54.8	39.9	94.6	6.9	101.5	74.5	6.8	57.7
Southern Melbourne	41.1	32.0	73.1	8.2	81.3	70.6	10.1	53.5
Outer Eastern Melbourne	55.6	50.8	106.3	6.5	112.8	74.6	5.7	60.2
South Eastern Melbourne	39.3	31.2	70.6	11.3	81.9	60.3	13.8	57.6
Mornington Peninsula	19.2	18.5	37.6	4.7	42.4	48.2	11.2	46.8
Balance of Victoria MSR-	120.2	114.6	234.7	25.7	260.4	249.5	9.9	51.1
Barwon-Western District	32.2	30.1	62.3	7.6	69.9	67.6	10.9	50.8
Central Highlands-Wimmera	17.8	19.7	37.5	*4.1	41.6	39.5	*9.8	51.3
Loddon-Campaspe-Mallee	21.1	19.9	41.0	*3.9	44.9	53.9	*8.6	45.4
Goulburn-Ovens-Murray	29.0	24.4	53.3	*3.8	57.1	43.3	*6.6	56.9
All Gippsland	20.1	20.5	40.6	6.3	46.9	45.1	13.4	51.0
Total	511.1	391.9	903.0	101.7	1,004.7	845.0	10.1	54.3
PERSONS								
Melbourne MSR-	1,162.6	366.5	1,529.0	170.9	1,699.9	915.9	10.1	65.0
North Western Melbourne	87.8	25.1	112.8	17.1	130.0	75.3	13.2	63.3
Outer Western Melbourne	174.5	48.2	222.8	30.0	252.8	148.1	11.9	63.0
Inner Melbourne	95.1	19.7	114.9	15.7	130.6	65.9	12.0	66.4
North Eastern Melbourne	148.1	45.8	193.9	23.5	217.4	124.0	10.8	63.7
Inner Eastern Melbourne	154.5	55.0	209.5	17.1	226.6	121.5	7.5	65.1
Southern Melbourne	125.2	46.8	171.9	18.4	190.3	103.5	9.7	64.8
Outer Eastern Melbourne	174.3	62.0	236.2	17.1	253.4	112.6	6.8	69.2
South Eastern Melbourne	136.0	38.1	174.1	22.5	196.6	88.5	11.4	69.0
Mornington Peninsula	67.1	25.8	92.9	9.5	102.4	76.4	9.3	57.3
Balance of Victoria MSR-	398.3	156.6	554.9	63.2	618.1	387.3	10.2	61.5
Barwon-Western District	107.7	37.2	145.0	18.6	163.6	104.2	11.4	61.1
Central Highlands-Wimmera	61.1	26.8	87.9	10.1	98.0	63.1	10.3	60.8
Loddon-Campaspe-Mallee	65.7	28.1	93.8	11.1	104.9	82.7	10.6	55.9
Goulburn-Ovens-Murray	94.1	34.9	129.0	9.2	138.3	64.4	6.7	68.2
All Gippsland	69.8	29.6	99.3	14.1	113.4	72.8	12.4	60.9
Total	1,560.9	523.0	2,084.0	234.1	2,318.0	1,303.2	10.1	64.0

**TABLE 10. CIVILIAN POPULATION AGED 15 YEARS AND OVER BY
LABOUR FORCE STATUS AND AGE,
VICTORIAN REGIONS, FEBRUARY 1997**

Age (years)	Males				Females				Persons			
	Employed ('000)	Labour force ('000)	Not in labour force ('000)	Participation rate (%)	Employed ('000)	Labour force ('000)	Not in labour force ('000)	Participation rate (%)	Employed ('000)	Labour force ('000)	Not in labour force ('000)	Participation rate (%)
NORTH WESTERN MELBOURNE:												
15 - 24	10.2	12.6	4.2	75.0	13.3	15.6	5.9	72.6	23.5	28.2	10.1	73.6
25 - 34	18.8	23.0	*0.8	96.5	14.4	16.4	9.0	64.5	33.1	39.4	9.8	80.0
35 - 44	18.1	18.8	*1.6	92.3	13.0	15.0	5.6	72.9	31.1	33.8	7.1	82.6
45 - 54	9.6	10.4	3.2	76.3	5.6	6.9	5.1	57.7	15.2	17.3	8.3	67.6
55 and over	7.3	7.8	17.1	31.3	*2.8	3.5	22.9	13.2	10.0	11.3	39.9	22.0
Total	63.9	72.7	26.9	73.0	49.0	57.3	48.4	54.2	112.8	130.0	75.3	63.3
OUTER WESTERN MELBOURNE:												
15 - 24	23.8	29.9	11.6	72.1	20.7	25.3	16.0	61.3	44.5	55.2	27.5	66.7
25 - 34	33.3	38.6	2.9	93.0	26.6	28.6	13.1	68.6	59.9	67.2	16.0	80.8
35 - 44	32.9	36.3	3.1	92.0	26.0	29.1	13.3	68.7	58.9	65.4	16.4	79.9
45 - 54	26.7	28.6	5.6	83.6	17.8	20.2	12.5	61.8	44.6	48.8	18.1	72.9
55 and over	10.1	11.2	29.8	27.3	4.7	5.0	40.3	11.0	14.9	16.1	70.1	18.7
Total	126.9	144.6	53.0	73.2	95.9	108.2	95.1	53.2	222.8	252.8	148.1	63.0
INNER MELBOURNE:												
15 - 24	8.6	10.6	4.1	72.1	10.3	12.4	5.6	69.1	18.9	23.1	9.7	70.5
25 - 34	22.4	25.2	*3.4	88.0	25.1	27.1	5.6	83.0	47.5	52.3	9.0	85.3
35 - 44	11.9	14.0	*2.6	84.2	10.1	11.8	4.8	71.0	22.0	25.9	7.5	77.6
45 - 54	9.6	10.7	*2.7	79.9	8.0	9.3	*1.9	83.3	17.6	20.0	4.5	81.5
55 and over	7.1	7.1	13.2	35.0	*1.8	*2.2	22.1	*9.2	8.9	9.4	35.3	21.0
Total	59.6	67.6	26.0	72.2	55.2	63.0	39.9	61.2	114.9	130.6	65.9	66.4
NORTH EASTERN MELBOURNE:												
15 - 24	16.7	21.6	6.9	75.8	15.6	19.7	8.9	68.8	32.3	41.3	15.8	72.3
25 - 34	32.1	35.5	*1.5	95.9	25.6	27.3	11.6	70.3	57.7	62.8	13.1	82.8
35 - 44	28.4	29.5	*2.3	92.7	23.9	25.7	8.6	75.0	52.4	55.2	10.9	83.5
45 - 54	19.1	21.3	*2.7	88.8	15.2	17.4	8.5	67.0	34.4	38.6	11.2	77.5
55 and over	11.5	13.6	26.7	33.7	5.6	5.8	46.3	11.2	17.1	19.4	73.0	21.0
Total	107.9	121.5	40.1	75.2	86.0	95.9	83.9	53.3	193.9	217.4	124.0	63.7
INNER EASTERN MELBOURNE:												
15 - 24	19.0	22.7	11.1	67.1	19.1	23.4	11.4	67.1	38.1	46.1	22.6	67.1
25 - 34	24.8	27.4	*1.9	93.7	20.8	21.6	8.2	72.5	45.6	49.0	10.0	83.0
35 - 44	26.1	27.9	*2.1	93.0	22.1	22.6	5.8	79.6	48.2	50.5	7.9	86.5
45 - 54	25.9	26.9	*2.9	90.2	23.4	24.8	6.4	79.4	49.3	51.7	9.4	84.7
55 and over	19.0	20.1	28.9	41.0	9.2	9.2	42.7	17.8	28.3	29.3	71.6	29.1
Total	114.9	125.1	46.9	72.7	94.6	101.5	74.5	57.7	209.5	226.6	121.5	65.1
SOUTHERN MELBOURNE:												
15 - 24	15.9	19.9	4.5	81.6	13.5	14.9	5.4	73.6	29.3	34.8	9.8	78.0
25 - 34	25.5	26.9	*0.8	97.1	17.1	19.6	5.4	78.4	42.6	46.5	6.2	88.2
35 - 44	24.1	25.9	*0.5	98.1	17.8	19.3	6.9	73.8	41.9	45.2	7.4	86.0
45 - 54	19.2	21.1	*2.1	90.8	17.0	19.7	4.5	81.3	36.2	40.8	6.7	85.9
55 and over	14.2	15.2	24.9	37.9	7.7	7.7	48.4	13.8	21.9	22.9	73.4	23.8
Total	98.8	109.0	32.9	76.8	73.1	81.3	70.6	53.5	171.9	190.3	103.5	64.8

**TABLE 10. CIVILIAN POPULATION AGED 15 YEARS AND OVER BY
LABOUR FORCE STATUS AND AGE,
VICTORIAN REGIONS, FEBRUARY 1997 - continued**

Age (years)	Males				Females				Persons			
	Employed (<i>'000</i>)	Labour force (<i>'000</i>)	Not in labour force (<i>'000</i>)	Partici- pation rate (%)	Employed (<i>'000</i>)	Labour force (<i>'000</i>)	Not in labour force (<i>'000</i>)	Partici- pation rate (%)	Employed (<i>'000</i>)	Labour force (<i>'000</i>)	Not in labour force (<i>'000</i>)	Partici- pation rate (%)
OUTER EASTERN MELBOURNE												
15 - 24	22.7	27.1	12.1	69.2	19.9	22.6	8.4	72.9	42.6	49.7	20.5	70.8
25 - 34	33.2	35.2	*2.4	93.7	25.8	27.6	9.0	75.4	59.0	62.8	11.4	84.7
35 - 44	35.4	37.3	*0.8	97.9	28.4	30.2	9.7	75.7	63.8	67.5	10.5	86.6
45 - 54	26.0	26.8	*3.2	89.3	25.0	25.0	12.2	67.2	51.0	51.8	15.4	77.0
55 and over	12.6	14.2	19.5	42.0	7.2	7.4	35.3	17.4	19.8	21.6	54.8	28.3
Total	129.9	140.5	38.0	78.7	106.3	112.8	74.6	60.2	236.2	253.4	112.6	69.2
SOUTH EASTERN MELBOURNE												
15 - 24	17.6	21.4	7.8	73.2	14.5	16.8	8.7	65.8	32.1	38.2	16.6	69.7
25 - 34	29.3	31.9	*1.3	96.2	21.2	23.7	10.9	68.4	50.5	55.7	12.2	82.0
35 - 44	27.9	30.0	*0.8	97.4	18.5	22.1	8.6	71.9	46.4	52.0	9.4	84.7
45 - 54	20.1	21.4	*2.2	90.8	12.5	15.2	7.7	66.3	32.6	36.6	9.9	78.7
55 and over	8.7	10.0	16.2	38.1	3.9	4.1	24.3	14.6	12.6	14.1	40.5	25.9
Total	103.5	114.7	28.3	80.2	70.6	81.9	60.3	57.6	174.1	196.6	88.5	69.0
MORNINGTON PENINSULA												
15 - 24	11.4	12.3	*3.3	78.7	7.6	9.8	5.2	65.3	19.0	22.1	8.5	72.1
25 - 34	11.3	11.8	*0.3	97.7	7.6	8.1	4.6	63.7	19.0	20.0	4.9	80.2
35 - 44	12.9	13.8	*0.3	98.1	9.6	9.9	4.9	67.1	22.5	23.7	5.1	82.2
45 - 54	14.4	16.0	*0.5	96.7	8.8	10.4	*3.2	76.3	23.2	26.4	3.8	87.5
55 and over	5.3	6.0	23.8	20.2	4.0	4.2	30.3	12.2	9.2	10.2	54.1	15.9
Total	55.3	60.0	28.2	68.0	37.6	42.4	48.2	46.8	92.9	102.4	76.4	57.3

**TABLE 10. CIVILIAN POPULATION AGED 15 YEARS AND OVER BY
LABOUR FORCE STATUS AND AGE,
VICTORIAN REGIONS, FEBRUARY 1997 - continued**

Age (years)	Males				Females				Persons			
	Employed (<i>'000</i>)	Labour force (<i>'000</i>)	Not in labour force (<i>'000</i>)	Partici- pation rate (%)	Employed (<i>'000</i>)	Labour force (<i>'000</i>)	Not in labour force (<i>'000</i>)	Partici- pation rate (%)	Employed (<i>'000</i>)	Labour force (<i>'000</i>)	Not in labour force (<i>'000</i>)	Partici- pation rate (%)
BARWON-WESTERN DISTRICT												
15 - 24	15.3	19.7	5.4	78.5	13.7	17.7	7.5	70.1	29.0	37.3	12.9	74.3
25 - 34	19.1	21.2	*1.9	91.6	16.4	16.9	6.7	71.5	35.5	38.1	8.7	81.4
35 - 44	21.2	23.2	*2.8	89.2	14.1	15.5	8.7	64.0	35.3	38.7	11.5	77.1
45 - 54	15.6	16.4	*2.2	88.4	12.8	14.3	7.4	65.8	28.5	30.7	9.6	76.2
55 and over	11.4	13.2	24.3	35.2	5.4	5.6	37.2	13.1	16.8	18.8	61.5	23.4
Total	82.7	93.7	36.6	71.9	62.3	69.9	67.6	50.8	145.0	163.6	104.2	61.1
CENTRAL HIGHLANDS-WIMMERA												
15 - 24	9.9	13.7	*2.5	84.6	9.1	11.0	*3.0	78.6	19.0	24.7	5.5	81.8
25 - 34	11.0	11.6	*1.3	89.7	8.0	8.6	5.6	60.6	19.0	20.1	6.9	74.5
35 - 44	13.4	13.7	*1.1	92.3	10.4	10.9	4.8	69.6	23.8	24.6	5.9	80.7
45 - 54	11.1	12.5	*1.1	91.9	7.6	8.7	*3.4	71.8	18.7	21.1	*4.5	82.4
55 and over	4.9	4.9	17.5	21.9	*2.4	*2.4	22.8	*9.7	7.3	7.3	40.3	15.4
Total	50.3	56.4	23.6	70.5	37.5	41.6	39.5	51.3	87.9	98.0	63.1	60.8
LODDON-CAMPASPE-MALLEE												
15 - 24	7.3	10.1	4.4	69.6	9.5	11.0	6.2	64.0	16.8	21.0	10.6	66.5
25 - 34	12.8	14.4	*1.9	88.1	10.4	11.2	5.8	65.7	23.2	25.6	7.8	76.7
35 - 44	15.9	16.7	*1.9	90.0	10.6	12.0	6.4	65.1	26.5	28.8	8.3	77.6
45 - 54	10.1	10.9	*3.2	77.4	8.8	9.0	5.4	62.5	18.9	19.9	8.6	69.8
55 and over	6.8	8.0	17.5	31.4	*1.6	*1.6	30.0	*5.1	8.4	9.6	47.5	16.8
Total	52.8	60.0	28.8	67.5	41.0	44.9	53.9	45.4	93.8	104.9	82.7	55.9
GOULBURN-OVENS-MURRAY												
15 - 24	12.7	14.7	*3.0	83.0	11.3	11.8	5.7	67.6	23.9	26.6	8.7	75.4
25 - 34	16.8	18.2	*0.8	95.7	10.4	12.0	5.7	67.9	27.2	30.2	6.5	82.3
35 - 44	17.1	17.7	*1.4	92.8	14.0	15.1	5.3	74.0	31.1	32.8	6.7	83.1
45 - 54	16.7	17.6	*1.6	91.6	11.6	12.2	*2.7	81.7	28.4	29.7	4.3	87.3
55 and over	12.3	13.0	14.3	47.6	6.0	6.0	23.9	20.0	18.3	18.9	38.2	33.2
Total	75.7	81.1	21.1	79.4	53.3	57.1	43.3	56.9	129.0	138.3	64.4	68.2
ALL GIPPSLAND												
15 - 24	10.7	14.2	5.1	73.5	8.1	9.7	*4.6	68.0	18.8	24.0	9.7	71.2
25 - 34	10.4	11.9	*1.7	87.5	7.0	7.8	5.6	58.1	17.3	19.6	7.3	72.9
35 - 44	15.5	16.6	*0.9	95.0	12.3	14.6	*3.9	78.8	27.9	31.2	4.8	86.7
45 - 54	14.1	15.0	*2.7	84.6	9.7	10.7	5.9	64.5	23.8	25.7	8.6	74.9
55 and over	8.0	8.9	17.3	34.0	*3.5	*4.1	25.1	*14.0	11.6	13.0	42.4	23.4
Total	58.7	66.6	27.7	70.6	40.6	46.9	45.1	51.0	99.3	113.4	72.8	60.9

**TABLE 10. CIVILIAN POPULATION AGED 15 YEARS AND OVER BY
LABOUR FORCE STATUS AND AGE,
VICTORIAN REGIONS, FEBRUARY 1997 - continued**

Age (years)	Males				Females				Persons			
	Employed (<i>'000</i>)	Labour force (<i>'000</i>)	Not in labour force (<i>'000</i>)	Partici- pation rate (%)	Employed (<i>'000</i>)	Labour force (<i>'000</i>)	Not in labour force (<i>'000</i>)	Partici- pation rate (%)	Employed (<i>'000</i>)	Labour force (<i>'000</i>)	Not in labour force (<i>'000</i>)	Partici- pation rate (%)
TOTAL MELBOURNE MSR												
15 - 19 -	46.0	60.5	51.4	54.0	46.8	59.4	46.9	55.9	92.7	119.8	98.4	54.9
15 - 17	17.0	25.0	40.2	38.4	20.1	28.0	34.2	45.0	37.0	53.0	74.4	41.6
18 - 19	29.0	35.5	11.2	76.0	26.7	31.4	12.7	71.2	55.7	66.8	23.9	73.6
20 - 24	99.9	117.7	14.2	89.2	87.7	101.1	28.5	78.0	187.6	218.8	42.7	83.7
25 - 34	230.8	255.5	15.3	94.4	184.1	200.1	77.4	72.1	415.0	455.6	92.7	83.1
35 - 44	217.7	233.5	14.1	94.3	169.5	185.8	68.1	73.2	387.2	419.3	82.2	83.6
45 - 54	170.6	183.2	25.2	87.9	133.3	148.7	62.1	70.6	303.9	331.9	87.3	79.2
55 - 59	55.3	61.1	15.0	80.3	28.7	31.1	43.5	41.7	84.0	92.2	58.5	61.2
60 - 64	27.7	30.6	31.4	49.4	12.3	12.3	50.3	19.7	40.0	43.0	81.7	34.5
65 and over	12.7	13.4	153.7	8.0	5.8	5.8	218.7	2.6	18.6	19.3	372.4	4.9
Total	860.7	955.6	320.4	74.9	668.3	744.3	595.5	55.6	1,529.0	1,699.9	915.9	65.0
TOTAL BALANCE OF VICTORIA MSR												
15 - 19 -	23.3	32.6	16.9	65.9	23.6	29.0	18.0	61.8	46.9	61.7	34.9	63.9
15 - 17	12.1	16.3	14.1	53.5	11.0	14.3	14.6	49.5	23.2	30.6	28.7	51.6
18 - 19	11.1	16.3	*2.8	85.5	12.6	14.8	*3.4	81.4	23.7	31.1	6.1	83.5
20 - 24	32.6	39.8	*3.5	91.9	28.0	32.1	9.0	78.2	60.6	71.9	12.5	85.2
25 - 34	70.1	77.2	7.7	90.9	52.2	56.4	29.4	65.7	122.3	133.6	37.2	78.2
35 - 44	83.2	88.0	8.1	91.6	61.4	68.1	29.2	70.0	144.6	156.1	37.2	80.7
45 - 54	67.6	72.3	10.8	87.0	50.6	54.9	24.9	68.8	118.2	127.2	35.7	78.1
55 - 59	19.9	23.2	8.5	73.2	10.3	11.1	20.0	35.7	30.1	34.3	28.5	54.7
60 - 64	11.2	12.0	16.1	42.7	5.7	5.7	23.0	19.8	16.9	17.7	39.1	31.2
65 and over	12.4	12.7	66.2	16.1	*3.0	*3.0	96.1	*3.0	15.4	15.7	162.3	8.8
Total	320.2	357.7	137.8	72.2	234.7	260.4	249.5	51.1	554.9	618.1	387.3	61.5
TOTAL VICTORIA												
15 - 19 -	69.2	93.1	68.3	57.7	70.4	88.4	64.9	57.7	139.6	181.5	133.2	57.7
15 - 17	29.1	41.3	54.4	43.2	31.1	42.3	48.8	46.4	60.2	83.6	103.2	44.8
18 - 19	40.1	51.8	14.0	78.8	39.3	46.1	16.1	74.1	79.4	97.9	30.1	76.5
20 - 24	132.5	157.5	17.7	89.9	115.7	133.2	37.5	78.1	248.2	290.7	55.2	84.0
25 - 34	300.9	332.7	23.0	93.5	236.4	256.5	106.8	70.6	537.2	589.2	129.8	81.9
35 - 44	300.9	321.5	22.2	93.5	230.9	253.9	97.3	72.3	531.8	575.4	119.5	82.8
45 - 54	238.3	255.5	36.0	87.7	183.9	203.7	87.0	70.1	422.2	459.2	122.9	78.9
55 - 59	75.2	84.4	23.5	78.2	39.0	42.1	63.5	39.9	114.2	126.5	87.0	59.3
60 - 64	38.9	42.7	47.5	47.3	18.0	18.0	73.3	19.7	56.9	60.7	120.8	33.4
65 and over	25.1	26.1	219.9	10.6	8.9	8.9	314.8	2.7	33.9	34.9	534.7	6.1
Total	1,180.9	1,313.3	458.2	74.1	903.0	1,004.7	845.0	54.3	2,084.0	2,318.0	1,303.2	64.0

**TABLE 11. EMPLOYED PERSONS BY INDUSTRY AND OCCUPATION(a) BY AGE,
VICTORIA, FEBRUARY 1997
(*000)**

Classification	Age group (years)							Total
	15 - 19	20 - 24	25 - 34	35 - 44	45 - 54	55 - 59	60 and over	
INDUSTRY								
Agriculture, forestry and fishing	8.7	9.7	17.2	25.8	26.6	6.5	18.6	113.1
Mining	*0.2	*0.3	*1.6	*0.3	*0.8	*0.6	*0.0	*3.8
Manufacturing	12.8	40.9	102.8	92.3	68.3	23.1	12.5	352.7
Electricity, gas and water supply	*0.9	*0.9	*3.7	*3.8	*3.2	*0.8	*0.0	13.3
Construction	*4.5	11.1	34.1	37.6	21.7	8.5	*4.0	121.4
Wholesale trade	*3.9	16.4	34.8	29.4	23.5	7.9	7.5	123.4
Retail trade	71.8	56.7	61.7	57.3	44.3	13.0	9.7	314.5
Accommodation, cafes and restaurants	10.9	17.6	17.6	13.5	13.8	*2.4	*1.9	77.6
Transport and storage	*2.2	10.0	23.4	27.4	23.0	7.7	5.3	99.0
Communication services	*0.5	*3.2	14.6	12.1	9.7	*2.8	*0.3	43.2
Finance and insurance	*1.4	9.2	34.5	18.8	12.7	*1.8	*2.4	80.8
Property and business services	5.9	25.5	58.6	52.7	50.8	8.8	6.9	209.1
Government administration and defence	*1.3	5.5	22.4	21.5	24.4	*4.5	*3.8	83.3
Education	*2.4	5.5	23.3	50.8	37.4	9.2	*4.0	132.5
Health and community services	*4.1	15.7	49.0	54.3	41.4	11.1	9.9	185.5
Cultural and recreational services	*4.2	9.6	15.7	12.4	5.9	*1.7	*0.3	49.7
Personal and other services	*4.1	10.6	22.1	21.9	14.6	*4.0	*3.8	81.0
Total	139.6	248.2	537.2	531.8	422.2	114.2	90.8	2,084.0
OCCUPATION								
Managers and administrators	*0.3	*3.7	26.8	43.1	52.5	13.0	20.3	159.7
Professionals	*0.9	26.6	107.0	118.7	83.7	21.6	14.6	373.3
Associate professionals	*3.2	18.4	55.1	70.5	54.5	12.2	8.9	222.9
Tradespersons and related workers	18.0	44.0	78.5	76.2	46.1	17.1	7.7	287.6
Advanced clerical and service workers	*1.2	10.1	28.4	24.1	21.8	4.8	5.7	96.0
Intermediate clerical, sales and service workers	17.0	54.7	96.7	72.3	57.9	13.9	7.9	320.5
Intermediate production and transport workers	7.6	22.0	57.2	58.3	41.5	14.3	8.8	209.8
Elementary clerical, sales and service workers	61.6	42.6	45.7	27.5	26.3	7.4	8.3	219.3
Labourers and related workers	29.8	26.1	41.7	41.1	37.8	9.7	8.7	194.9
Total	139.6	248.2	537.2	531.8	422.2	114.2	90.8	2,084.0

(a) From August 1996, occupation data are classified to the Australian Standard Classification of Occupations, Second Edition. See the Explanatory notes for details.

**TABLE 12. EMPLOYED PERSONS BY INDUSTRY AND OCCUPATION(a) BY MARITAL STATUS,
VICTORIA, FEBRUARY 1997**
(^{'000})

Classification	Males			Females			Persons		
	Married	Other	Total	Married	Other	Total	Married	Other	Total
INDUSTRY									
Agriculture, forestry and fishing	50.6	28.4	79.0	27.4	6.7	34.1	78.0	35.1	113.1
Mining	*2.2	*1.1	*3.3	*0.5	*0.0	*0.5	*2.7	*1.1	*3.8
Manufacturing	167.9	87.4	255.3	64.8	32.6	97.5	232.7	120.0	352.7
Electricity, gas and water supply	7.6	*2.8	10.4	*0.5	*2.4	*2.9	8.1	5.2	13.3
Construction	75.7	31.1	106.7	12.7	*1.9	14.6	88.4	33.0	121.4
Wholesale trade	56.7	28.2	84.9	24.3	14.3	38.5	81.0	42.4	123.4
Retail trade	74.7	83.5	158.2	72.4	83.9	156.3	147.1	167.5	314.5
Accommodation, cafes and restaurants	12.9	19.1	32.0	23.1	22.5	45.6	36.0	41.6	77.6
Transport and storage	54.0	19.9	73.9	14.6	10.4	25.1	68.6	30.4	99.0
Communication services	17.7	8.1	25.8	9.6	7.8	17.4	27.3	15.9	43.2
Finance and insurance	22.2	14.0	36.2	24.0	20.6	44.6	46.2	34.6	80.8
Property and business services	76.6	41.2	117.8	51.0	40.3	91.4	127.7	81.5	209.1
Government administration and defence	26.6	12.4	39.0	26.2	18.1	44.3	52.9	30.5	83.3
Education	33.1	14.7	47.8	61.3	23.4	84.7	94.4	38.1	132.5
Health and community services	28.7	9.8	38.5	95.1	51.9	147.0	123.7	61.7	185.5
Cultural and recreational services	14.1	12.4	26.5	11.9	11.3	23.2	25.9	23.7	49.7
Personal and other services	29.9	15.7	45.6	15.1	20.3	35.4	45.0	36.0	81.0
Total	751.1	429.8	1,180.9	534.7	368.4	903.0	1,285.8	798.2	2,084.0
OCCUPATION									
Managers and administrators	95.5	22.7	118.2	32.6	8.9	41.6	128.1	31.6	159.7
Professionals	135.4	60.9	196.3	112.3	64.7	177.0	247.6	125.6	373.3
Associate professionals	101.8	35.7	137.5	55.5	29.9	85.4	157.3	65.6	222.9
Tradespersons and related workers	158.2	98.6	256.8	17.5	13.3	30.8	175.7	111.9	287.6
Advanced clerical and service workers	7.3	*3.9	11.2	59.0	25.8	84.8	66.3	29.7	96.0
Intermediate clerical, sales and service workers	49.5	41.0	90.5	130.5	99.5	230.0	180.0	140.5	320.5
Intermediate production and transport workers	118.1	55.7	173.7	25.8	10.3	36.1	143.9	65.9	209.8
Elementary clerical, sales and service workers	27.6	49.9	77.4	57.3	84.6	141.8	84.8	134.4	219.3
Labourers and related workers	57.8	61.5	119.3	44.3	31.3	75.6	102.1	92.8	194.9
Total	751.1	429.8	1,180.9	534.7	368.4	903.0	1,285.8	798.2	2,084.0

(a) From August 1996, occupation data are classified to the Australian Standard Classification of Occupations, Second Edition. See the Explanatory notes for details.

TABLE 13. EMPLOYED PERSONS: AVERAGE WEEKLY HOURS WORKED(a) BY INDUSTRY AND OCCUPATION(b), VICTORIA, FEBRUARY 1997
(hours)

Classification	Males			Females			Persons		
	Married	Other	Total	Married	Other	Total	Married	Other	Total
INDUSTRY									
Agriculture, forestry and fishing	56.5	45.5	52.5	32.8	35.7	33.3	48.1	43.7	46.7
Mining	*39.0	*27.2	35.1	*19.9	*0.0	*19.9	35.3	*27.2	33.0
Manufacturing	42.1	39.3	41.1	33.6	36.1	34.4	39.7	38.5	39.3
Electricity, gas and water supply	40.9	32.9	38.8	*23.6	42.5	39.1	39.8	37.4	38.9
Construction	43.2	43.4	43.2	17.9	*30.9	19.6	39.5	42.7	40.4
Wholesale trade	43.9	39.9	42.6	31.7	33.2	32.2	40.2	37.7	39.3
Retail trade	47.2	30.6	38.4	28.2	21.5	24.6	37.8	26.1	31.6
Accommodation, cafes and restaurants	43.5	30.0	35.4	27.7	28.6	28.2	33.4	29.2	31.2
Transport and storage	42.8	40.3	42.1	27.2	34.4	30.2	39.4	38.3	39.1
Communication services	42.9	30.5	39.0	27.9	34.4	30.8	37.6	32.5	35.7
Finance and insurance	43.4	41.0	42.4	29.8	35.1	32.3	36.3	37.5	36.8
Property and business services	45.6	38.5	43.1	28.5	34.1	31.0	38.8	36.3	37.8
Government administration and defence	37.5	37.5	37.5	27.9	35.4	31.0	32.7	36.3	34.0
Education	43.5	36.1	41.2	33.5	38.1	34.8	37.0	37.3	37.1
Health and community services	38.4	36.2	37.9	27.1	30.1	28.2	29.8	31.1	30.2
Cultural and recreational services	42.1	31.6	37.2	29.3	25.6	27.5	36.3	28.8	32.7
Personal and other services	42.3	35.8	40.0	26.9	30.2	28.8	37.1	32.7	35.1
Total	44.0	37.2	41.5	29.4	30.5	29.8	38.0	34.1	36.5
OCCUPATION									
Managers and administrators	55.5	52.1	54.8	36.9	47.0	39.1	50.7	50.7	50.7
Professionals	45.2	42.5	44.4	32.0	37.8	34.1	39.2	40.0	39.5
Associate professionals	46.3	39.9	44.7	34.0	38.3	35.5	42.0	39.2	41.2
Tradespersons and related workers	42.7	39.1	41.3	33.1	32.9	33.0	41.7	38.3	40.4
Advanced clerical and service workers	37.1	38.1	37.4	24.9	34.3	27.8	26.2	34.8	28.9
Intermediate clerical, sales and service workers	38.5	33.0	36.0	26.8	30.7	28.5	30.1	31.4	30.6
Intermediate production and transport workers	41.5	37.8	40.3	35.4	30.0	33.9	40.4	36.6	39.2
Elementary clerical, sales and service workers	38.6	26.8	31.0	24.2	20.3	21.9	28.9	22.7	25.1
Labourers and related workers	35.6	32.2	33.8	27.2	25.6	26.5	31.9	30.0	31.0
Total	44.0	37.2	41.5	29.4	30.5	29.8	38.0	34.1	36.5

(a) Persons with jobs who did not work during the survey week have been included in the calculation of average weekly hours worked. The relative standard errors of these estimates are obtained by first finding the relative standard error of the estimate of the total number of persons in the estimate and then multiplying by a factor of 0.7. For further information refer to the technical notes in Labour Force, Australia (6203.0). (b) From August 1996, occupation data are classified to the Australian Standard Classification of Occupations, Second Edition. See the Explanatory notes for details.

TABLE 14. EMPLOYED PERSONS: STATUS IN EMPLOYMENT AND AVERAGE WEEKLY HOURS WORKED, VICTORIA, FEBRUARY 1997

Status in employment	Males			Females			Persons		
	Married	Other	Total	Married	Other	Total	Married	Other	Total
	'000								
Employers	45.8	8.2	54.0	25.0	*2.4	27.4	70.7	10.6	81.3
Own account workers	93.6	37.7	131.3	48.6	11.5	60.1	142.2	49.2	191.4
Employees	609.6	378.3	987.9	452.5	351.9	804.4	1,062.0	730.2	1,792.3
Contributing family workers	*2.2	5.6	7.7	8.7	*2.5	11.2	10.8	8.1	18.9
Total	751.1	429.8	1,180.9	534.7	368.4	903.0	1,285.8	798.2	2,084.0
AVERAGE WEEKLY HOURS WORKED (a)									
Employers	55.2	59.2	55.8	36.6	37.7	36.7	48.7	54.3	49.4
Own account workers	47.9	41.9	46.2	27.8	33.3	28.8	41.0	39.9	40.7
Employees	42.7	36.4	40.3	29.4	30.4	29.9	37.1	33.5	35.6
Contributing family workers	*19.5	22.5	21.7	17.6	13.3	16.6	18.0	19.6	18.7
Total	44.0	37.2	41.5	29.4	30.5	29.8	38.0	34.1	36.5

(a) The relative standard errors of these estimates are obtained by first finding the relative standard error of the estimate of the total number of persons in the estimate and then multiplying by a factor of 0.7. For further information refer to the technical notes in Labour Force, Australia (6203.0).

TABLE 15. UNEMPLOYED PERSONS: INDUSTRY AND OCCUPATION(a) OF LAST JOB(b), VICTORIA, FEBRUARY 1997

Particulars	Number ('000)			Unemployment rate (%)		
	Males	Females	Persons	Males	Females	Persons
Industry						
Agriculture, forestry and fishing	*3.1	*0.9	*4.0	*3.8	*2.6	*3.4
Mining	*0.6	*0.0	*0.6	*14.8	*0.0	*13.1
Manufacturing	17.4	5.6	23.0	6.4	5.4	6.1
Electricity, gas and water supply	*2.5	*0.0	*2.5	*19.1	*0.0	*15.6
Construction	7.4	*0.0	7.4	6.5	*0.0	5.7
Wholesale trade	*2.7	*1.1	*3.8	*3.1	*2.7	*3.0
Retail trade	8.7	5.7	14.5	5.2	3.5	4.4
Accommodation, cafes and restaurants	*3.4	*3.3	6.7	*9.7	*6.8	8.0
Transport and storage	*3.2	*1.6	4.8	*4.2	*5.9	4.6
Communication services	*1.0	*0.8	*1.9	*3.8	*4.5	*4.1
Finance and insurance	*0.8	*1.6	*2.5	*2.2	*3.5	*2.9
Property and business services	5.8	4.7	10.5	4.7	4.9	4.8
Government administration and defence	5.5	*2.5	8.0	12.3	*5.4	8.7
Education	*2.6	*3.2	5.8	*5.2	*3.6	4.2
Health and community services	*0.0	*2.4	*2.4	*0.0	*1.6	*1.3
Cultural and recreational services	*1.1	*1.1	*2.2	*4.0	*4.6	*4.3
Personal and other services	*1.5	*2.0	*3.5	*3.1	*5.4	*4.2
Total (b)	67.3	36.6	104.0	5.4	3.9	4.8
Occupation						
Managers and administrators	*2.1	*0.5	*2.6	*1.7	*1.2	*1.6
Professionals	6.4	5.1	11.5	3.2	2.8	3.0
Associate professionals	5.0	*3.7	8.6	3.5	*4.1	3.7
Tradespersons and related workers	13.5	*2.7	16.2	5.0	*8.1	5.3
Advanced clerical and service workers	*0.5	*2.0	*2.6	*4.5	*2.4	*2.6
Intermediate clerical, sales and service workers	6.4	10.3	16.7	6.6	4.3	4.9
Intermediate production and transport workers	14.8	*2.6	17.4	7.9	*6.7	7.7
Elementary clerical, sales and service workers	5.7	5.9	11.6	6.8	4.0	5.0
Labourers and related workers	13.0	*3.8	16.8	9.8	*4.8	8.0
Total (b)	67.3	36.6	104.0	5.4	3.9	4.8
Not employed (b) in the past two years	62.3	62.4	124.6
Looking for first job	25.1	25.1	50.2
Other	37.1	37.3	74.4
Stood down	*2.8	*2.7	5.5
Total	132.4	101.7	234.1	10.1	10.1	10.1

(a) From August 1996, occupation data are classified to the Australian Standard Classification of Occupations, Second Edition. See the Explanatory notes for details. (b) Full-time job for two weeks or more within the last two years.

**TABLE 16. UNEMPLOYED PERSONS BY DURATION OF UNEMPLOYMENT(a),
VICTORIA, FEBRUARY 1997**

<i>Particulars</i>	<i>Number ('000)</i>			<i>Percentage distribution</i>		
	<i>Males</i>	<i>Females</i>	<i>Persons</i>	<i>Males</i>	<i>Females</i>	<i>Persons</i>
Duration of unemployment						
(weeks) -						
Under 2	5.1	7.2	12.4	3.9	7.1	5.3
2 and under 4	8.9	8.6	17.5	6.7	8.5	7.5
4 and under 8	17.2	13.9	31.1	13.0	13.7	13.3
8 and under 13	16.6	13.7	30.3	12.5	13.5	12.9
13 and under 26	16.6	11.5	28.1	12.5	11.3	12.0
26 and under 52	21.2	14.9	36.1	16.0	14.7	15.4
52 and under 104	16.9	13.0	29.9	12.8	12.7	12.8
104 and over	29.9	18.8	48.7	22.6	18.5	20.8
Age (years) -						
15 - 19						
Under 13 weeks	16.8	11.2	28.0	12.7	11.0	12.0
13 weeks and under 52	*3.4	*3.5	6.9	*2.6	*3.4	3.0
52 weeks and over	*3.7	*3.3	7.0	*2.8	*3.3	3.0
Total aged 15 - 19	23.9	18.0	41.9	18.0	17.7	17.9
20 - 24						
Under 13 weeks	9.7	7.9	17.6	7.3	7.8	7.5
13 weeks and under 52	8.4	5.4	13.8	6.3	5.3	5.9
52 weeks and over	6.9	*4.2	11.1	5.2	*4.1	4.7
Total aged 20 - 24	25.0	17.5	42.5	18.9	17.2	18.1
25 and over						
Under 13 weeks	21.3	24.4	45.7	16.1	24.0	19.5
13 weeks and under 52	25.9	17.6	43.6	19.6	17.3	18.6
52 weeks and over	36.3	24.2	60.5	27.4	23.8	25.8
Total aged 25 and over	83.5	66.2	149.7	63.1	65.1	64.0
Total all ages	132.4	101.7	234.1	100.0	100.0	100.0
DURATION OF UNEMPLOYMENT (WEEKS)						
Average (mean) duration-						
Aged 15 - 19	20.1	23.5	21.6
Aged 20 - 24	45.2	33.0	40.2
Aged 25 and over	77.2	64.4	71.6
All ages	60.9	51.8	56.9
Median duration (b)-						
Aged 15 - 19	8.0	9.0	8.0
Aged 20 - 24	17.0	15.0	15.0
Aged 25 and over	36.0	26.0	30.0
All ages	26.0	18.0	23.0

(a) Period from the time a person began looking for work, or was laid off to the end of the reference week. Periods of unemployment are recorded in complete weeks resulting in a slight understatement of duration of unemployment. (b) For information regarding the calculation of standard errors, refer to the technical notes in Labour Force, Australia (6203.0).

EXPLANATORY NOTES

- INTRODUCTION** This publication contains estimates of the civilian labour force derived from the Labour Force Survey component of the Monthly Population Survey. Estimates of the labour force characteristics of family members are also included.
- POPULATION SURVEY** 2 The population survey is based on a multi-stage area sample of private dwellings (currently about 30,000 houses, flats, etc.) and a list sample of non-private dwellings (hotels, motels, etc.), and covers about 0.5% of the population of Australia. The information is obtained from the occupants of selected dwellings by specially trained interviewers. The interviews are generally conducted during the two weeks beginning on the Monday between the 6th and 12th of each month. The information obtained relates to the week before the interview (i.e. the reference week). The ABS has introduced the use of telephone interviewing into the Labour Force Survey. Households selected for the Labour Force Survey are interviewed each month for 8 months, with one eighth of the sample being replaced each month. The first interview will continue to be conducted face-to-face. Subsequent interviews will then be conducted by telephone (if acceptable to the respondent). Telephone interviewing was phased in for each new sample group from August 1996 to February 1997.
- SCOPE** 3 The Labour Force Survey includes all persons aged 15 and over except:
- members of the permanent defence forces;
 - certain diplomatic personnel of overseas governments, customarily excluded from census and estimated populations;
 - overseas residents in Australia; and
 - members of non-Australian defence forces (and their dependants) stationed in Australia.
- COVERAGE** 4 In the Labour Force Survey, coverage rules are applied which aim to ensure that each person is associated with only one dwelling, and hence has only one chance of selection. The chance of a person being enumerated at two separate dwellings in the one survey is considered to be negligible. See paragraph 47 for information about the effect of the coverage rules on family statistics.
- 5 Persons who are away from their usual residence for six weeks or less at the time of interview are enumerated at their usual residence (relevant information may be obtained from other usual residents present at the time of the survey).
- POPULATION BENCHMARKS** 6 Labour Force Survey estimates of persons employed, unemployed and not in the labour force are calculated in such a way as to add up to the independently estimated distribution of the usually resident population aged 15 and over by age and sex. This procedure compensates for under-enumeration in the survey, and leads to more reliable estimates. Persons who, at the time of interview, are overseas for more than six weeks but for less than 12 months are included in the independent population statistics (benchmarks) and are thus provided for in the calculation of the estimates. The benchmarks are the latest available estimates at the time the Labour Force Survey is conducted, but they usually differ from the official population estimates subsequently published in *Australian Demographic Statistics* (3101.0) because they are derived from incomplete information about population changes.

REVISION OF POPULATION BENCHMARKS

7 Survey estimates are not revised for the usually small amendments of population benchmarks arising from new data on deaths and overseas and internal migration. Revisions are made, however, after each Census of Population and Housing, and when population estimation bases are reviewed. These revisions affect original, seasonally adjusted and trend estimates. The last such revision was made in February 1994 to take account of the results of the 1991 Census of Population and Housing, which affected the monthly estimates from January 1989 to January 1994.

8 Population benchmarks used in the estimation of Labour Force Survey data are compiled according to place of usual residence. For an explanation of the conceptual basis of population estimates, see *Information Paper: Population Estimates: An Outline of The New Conceptual Basis of ABS Population Estimates* (3216.0). Prior to October 1982, labour force estimates were based on a combination of place of enumeration and place of usual residence.

HISTORY OF THE SURVEY

9 National surveys were conducted in February, May, August and November each year from 1964 to February 1978. The survey has been conducted on a monthly basis since February 1978.

QUESTIONNAIRE CHANGES

10 The questionnaire used in the survey for the collection of labour force data has been revised from time to time, the latest occasion being for the April 1986 survey. Details of these changes have been published in *Information Paper: Questionnaires Used in the Labour Force Survey* (6232.0) in March 1978, December 1981, August 1984, June 1986, June 1991 and March 1993.

INCLUSION OF CONTRIBUTING FAMILY WORKERS

11 In April 1986, the questionnaire was revised following the extension of the definition of employed persons to include persons who worked without pay between 1 and 14 hours per week in a family business or on a farm (i.e. contributing family workers previously unpaid family helpers). This definition aligned the Australian labour force concepts with the set of definitions adopted by the 13th International Conference of Labour Statisticians in October 1982.

12 Previously, contributing family workers who worked 1 to 14 hours, or who had such a job but were not at work, were defined as either unemployed or not in the labour force, depending on whether they were actively looking for work.

13 A revised procedure for weighting families estimates, was also introduced in April 1986.

COMPARABILITY OF SERIES

14 As noted in paragraph 7, estimates from January 1989 were revised to conform to revised population estimates following the 1991 Census of Population and Housing, and are thus not strictly comparable with estimates for periods prior to January 1989. An examination of the revised estimates showed that the effects on Labour Force Survey estimates for the period before January 1989 were inconsequential, and that no meaningful purpose would be served by publishing revised estimates for that period.

15 Comparability with estimates produced from the quarterly Survey of Employment and Earnings is affected by the use of a different survey methodology and definitions. The Labour Force Survey provides estimates of people in jobs whereas the Survey of Employment and Earnings provides an estimate of the number of jobs held by wage and salary earners. A more detailed description of the differences between these two series is available on request.

SURVEY SAMPLE REDESIGN

16 Following each Population Census, the ABS redesigns and reselects the Labour Force Survey to take into account the new information which is obtained from the Census. The sample used in the Labour Force Survey from September 1987 to August 1992, which was designed and selected using preliminary data from the 1986 Census, was updated and reselected using information collected in the 1991 Census. The new sample was phased in over the period September 1992 to December 1992. For additional information, see *Information Paper: Labour Force Survey Sample Design* (6269.0), available from any ABS office.

17 The sampling fractions for each State/Territory differ and are such that the resultant sample yields reliable estimates of the main labour force aggregates for each State and Territory. The sampling fraction for Victoria has been changed from 1 in 230 to 1 in 242.

VICTORIAN REGIONS

18 In addition to the introduction of the new sampling fraction, the labour force regions were redesigned to provide more relevant small area data.

19 The changes were as follows:

- Melbourne Major Statistical Region was expanded to include the whole of the Shires of Cranbourne, Healesville and Pakenham, and part of the Shire of Upper Yarra;
- The old Mornington Peninsula Region was split into two regions: South Eastern Melbourne and the revised Mornington Peninsula region. There was approximately a 4% increase in the population of these aggregated regions due to the changes mentioned above. The two new regions are generally, but not strictly, comparable with the old region *when aggregated*;
- The Outer Eastern Melbourne Statistical Region now includes a small part of the old Eastern Victoria region. This resulted in a small population increase of about 3.5%. As such the series should still be generally but not strictly comparable;
- The Eastern Victoria region was named the All Gippsland region. Due to the partial inclusion of the area covered by the old region in the Outer Eastern Melbourne Region and the corresponding drop in population of about 14%, All Gippsland is not comparable with Eastern Victoria;
- The South Western Victoria region was renamed as the Barwon-Western District region. Data for this region are still comparable;
- North Western Victoria and Northern Victoria regions were replaced by three new regions: Central Highlands-Wimmera, Loddon-Campaspe-Mallee and Goulburn-Ovens-Murray. The three new regions are still comparable with the old two regions *when aggregated*.

20 Detailed maps of the new Labour Force Statistical Regions are presented at the end of this publication. More information on the changes to regional boundaries is available in the *Information Paper: Regional Labour Force Statistics* (6262.0).

POTENTIAL EFFECTS ON LABOUR FORCE SURVEY ESTIMATES

21 The initial sampling error for Victorian estimates rose slightly, but will decline gradually over the life of the sample. The standard errors for the estimates of month-to-month movements produced over the period September 1992 to December 1992 were higher compared with those for the corresponding series produced prior to this period and from January 1993 onwards. In general, these were estimated to be up to 20% higher than the normal standard errors on monthly movements.

22 Analysis has shown that the unemployment rate is marginally higher (less than 0.5 percentage points on average) for those persons in sample for the first time. Normally, this does not affect the overall estimates of month-to-month movements because the number of persons in sample does not change significantly. However, during the transition period, there were about twice as many persons as usual in sample for the first time. This may have caused a small upward movement (of less than 0.1 percentage points on average) in the unemployment rate from August to September 1992 and a compensating decrease from December 1992 to January 1993.

23 For additional information, see *Information Paper: Labour Force Survey Sample Design* (6269.0), available from any ABS office.

RELIABILITY OF THE ESTIMATES

24 Estimates in this publication are subject to two sources of error:

- sampling error: since the estimates are based on information obtained from occupants of a sample of dwellings they, and the movements derived from them, may differ from the figures that would have been produced if all dwellings had been included in the survey. One measure of the likely difference is given by the standard error of an estimate (see paragraphs 26 to 29); and
- non-sampling error: inaccuracies may occur because of imperfections in reporting by respondents and interviewers and errors made in coding and processing data. These inaccuracies may occur in any enumeration, whether it be a full count or a sample. Every effort is made to reduce the non-sampling error to a minimum by careful design of questionnaires, intensive training and supervision of interviewers and efficient operating procedures.

25 As the above problems are compounded when the statistics are disaggregated to regional data, users are particularly advised to treat month-to-month movements for regional data with caution. (See the following paragraphs for more detail on determining the reliability of month-to-month movements.)

STANDARD ERROR TABLES

26 To assist you in determining the reliability of the various estimates contained in this publication, tables of standard errors of level estimates and month-to-month movements are included.

27 Use the table of standard errors of level estimates to determine the accuracy of most estimates contained in this publication. Use the tables of month-to-month movements to determine the accuracy of estimates when comparing one month's figures with another. This is particularly important with month-to-month movements in determining *whether or not the estimates indicate that a significant change has occurred*.

28 To use the tables, locate the figure in the *Size of estimate* column which is nearest in value to the estimate you wish to use. If you are comparing movements use the larger estimate. Read across the table until you find the column for the geographic area covered by the estimate concerned. This figure is one standard error.

29 There are approximately two chances in three that the true value which the estimate is attempting to measure is within plus or minus one standard error of the estimate. There are approximately nineteen chances in twenty that the true value is within plus or minus twice this amount.

30 A similar technique is used for month-to-month movements of estimates. After finding the standard error of the larger of the two estimates from the table of month-to-month movements of estimates (as in paragraph 28) compare the movement to one standard error; if the movement is larger then this indicates a likelihood that a change has occurred. If the movement is larger than two standard errors then this is a fairly reliable indicator of the change.

31 If comparing quarterly movements multiply the standard error by a factor of 1.1 before comparing it to the movement. If comparing annual movements multiply by a factor of 1.3 before making the comparison.

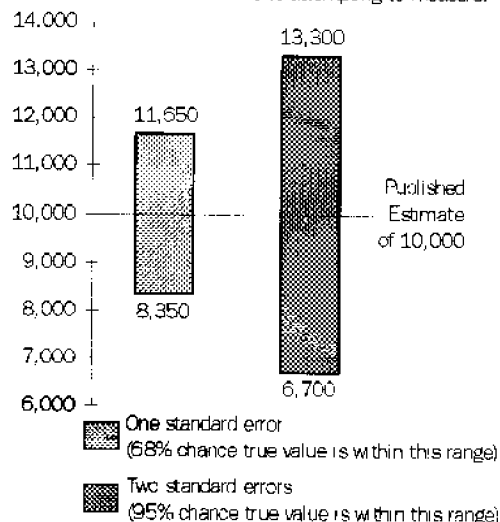
32 Another useful measure of reliability is relative standard error (RSE). The relative standard error of an estimate is the amount by which an estimate is likely to vary (one standard error) as a percentage of its size.

33 To calculate the relative standard error of an estimate, divide one standard error of the estimate by the estimate and multiply by 100.

34 Estimates with a relative standard error of 10% or less can be regarded as statistically reliable enough for most uses. Estimates with a relative standard error of 25% or more should not be regarded as reliable and care should be exercised when using them. All such estimates in this publication have been marked with an asterisk (*).

35 For this survey this warning applies to estimates of 4,600 or less for Victoria. Different geographic areas have different points at which the 25% relative standard error cut off takes effect. These are listed in Table A.

One standard error on a published estimate for Victoria is 1,650. The diagram shows the probable location of the true value which the estimate is attempting to measure.



DIFFERENCES BETWEEN CENSUS AND LABOUR FORCE SURVEY ESTIMATES

36 The results of the 1991 Census of Population and Housing show that labour force estimates derived from the Census differ from those derived from the Labour Force Survey.

37 The broad concepts underlying the measures of the labour force and its components, employment and unemployment, are similar in the census and the surveys. It should be noted, however, that census estimates of unemployment do not take into account the 'available for work' criterion.

38 There are considerable differences in both the collection methodology adopted (including the detailed questions asked) and estimation procedures. Factors contributing to differences in estimates include under-enumeration in the population census for which census labour force estimates have not been adjusted, the use in the Labour Force Survey of population benchmarks derived from incomplete information about population change (see paragraph 6), the inclusion of permanent defence forces in census estimates, the personal interview approach adopted in the survey as opposed to self-enumeration of census schedules, differing questions used to determine labour force characteristics (particularly the identification of unemployed persons) and differing methods of adjustment for non-response to the survey or census.

39 The Labour Force Survey provides detailed and up-to-date estimates of employment and unemployment for Australia, States and regions, whereas the Census of Population and Housing provides counts for small areas but in less detail than is available from the survey.

40 These considerations should be borne in mind when comparisons are made between population census and Labour Force Survey estimates.

SEASONAL ADJUSTMENT

41 Seasonally adjusted series are published in Table 2. Seasonal adjustment is a means of removing the estimated effects of normal seasonal variation from the series so that the effects of other influences on the series can be recognised more clearly. Seasonal adjustment does not remove the irregular or non-seasonal influences which may be present in any particular month. This means that month-to-month movements of the seasonally adjusted estimates may not be reliable indicators of trend behaviour. For example, irregular factors unrelated to the trend account for more than half the seasonally adjusted movement with the following frequency:

Employment: 5 in 10 monthly movements
Unemployment: 7 in 10 monthly movements
Unemployment rate: 7 in 10 monthly movements
Participation rate: 9 in 10 monthly movements

42 The seasonal factors for all seasonally adjusted series are reviewed annually to take account of each additional year's original data. The latest review, in February 1997, revised the Australian and State seasonally adjusted and trend monthly series back to February 1978. Information about the method of adjustment was published in the feature article of the February 1997 issue of *Labour Force, Australia* (6203.0). Revised seasonally adjusted and trend estimates for all months for Australia and the States are available on request.

TREND ESTIMATION

43 Smoothing seasonally adjusted series produces a measure of trend by reducing the impact of the irregular component of the series. The monthly trend estimates are derived by applying a 13-term Henderson weighted moving average to all months except the last six. The last six monthly trend estimates are obtained by applying surrogates of the Henderson average to the seasonally adjusted series. These trend series are used to analyse the underlying behaviour of the series over time. Table 3 shows trend estimates

for the past 15 months. Trend series graphs are shown on page 1. Data from February 1978 are available on the ABS on-line data dissemination service, PC-AUSSTATS.

44 While this smoothing technique enables estimates to be produced which include the latest month, it does result in revisions to the most recent months as additional observations become available. Generally, subsequent revisions become smaller, and after three months have a negligible impact on the series. There will also be revisions as a result of the annual review of seasonal factors mentioned above in paragraph 42.

45 Users may wish to refer to the ABS publication *A Guide to Interpreting Time Series—Monitoring "Trends", an Overview* (1348.0) for further information about trend estimates.

LABOUR FORCE STATUS AND OTHER CHARACTERISTICS OF FAMILIES

46 As a part of survey procedures, family relationships are determined each month, enabling both the estimation of persons cross-classified by their relationship in the household and the estimation of families. In this publication, Table 5 shows the labour force status and relationship in the household of individuals. The new classification *Family type* and information on families rather than the household relationship of individuals is contained in *Labour Force, Australia* (6203.0).

47 Because of the coverage rules, persons who usually live with other members of their family may, at the time of the survey, be enumerated as not living with all the usual members of their family. This situation is more likely for persons who are enumerated as visitors to other private dwellings or as persons staying in non-private dwellings (hotels, hospitals, etc.). The determination of family structure and family characteristics in such cases is difficult. Thus for survey questions used to determine family relationships, scope was further restricted to usual residents of private dwellings and the following persons were excluded:

- all persons enumerated in non-private dwellings (including hotels, motels, hospitals and other institutions); and
- persons enumerated as visitors to (rather than usual residents of) private dwellings.

48 In addition, in those households where it was not possible to obtain information relating to all the usual residents, no family information was recorded. Thus persons living in households which include a member of the permanent defence forces, who is outside the scope of the population survey, are excluded from survey questions used to determine family relationships because family information could not be obtained from each usual resident. Similarly households which, at the time of the survey, have one or more of their usual residents away for more than six weeks, are excluded from the family survey. This also applies to households from which an incomplete or inadequate questionnaire was obtained for any usual resident in on scope and coverage. Generally, relationship in household is determined for more than 90% of all civilians aged 15 and over.

CHANGES IN FAMILIES CLASSIFICATIONS

49 The *Relationship in household* classification was introduced in the May 1994 issue of this publication to align with recently established ABS standards. Most categories in this classification remain comparable with categories in the previous classification. The cases in which there are breaks in comparability are as follows:

50 Relationship in household. This classification was previously referred to as *Family status*.

- *Lone parents* (previously referred to as *Sole parents*) now includes parents with non-dependent children (provided those children are without a spouse or children of their own). These *Lone parents without dependants* are shown separately in Table 5.
- *Dependent students* (previously *Full-time students aged 15-24*) now comprise sons or daughters (of a couple or a lone parent) aged 15 to 19 attending school or aged 15 to 24 attending a tertiary educational institution full-time. Other related full-time students, who were also previously classified as *Full-time students aged 15-24* are now included in *Other family persons*.
- *Other family persons* now comprises the previous groups *Other family head*, excluding those now counted as *Lone parents*, the other related full-time students previously classified as *Full-time students aged 15-24* (see above) and *Other relative of married couple or family head*.

BIRTHPLACE

51 From April 1991, labour force birthplace data are aggregated according to major groups of the *Australian Standard Classification of Countries for Social Statistics (ASCCSS)* (1269.0). The ASCCSS was developed by the ABS for use whenever demographic, labour and social statistics are classified by countries.

52 The ASCCSS major groups are based on the concept of geographic proximity. They differ from the country groups presented in this publication prior to April 1991. For example, African countries are now covered by 'The Middle East and North Africa' and 'Africa (excluding North Africa)', while Asia has been split into 'Southeast Asia', 'Northeast Asia' and 'Southern Asia'. Data for selected individual countries will continue to be available in this publication and comprehensively on microfiche.

INDUSTRY

53 From August 1994, Labour Force Survey industry data are classified according to the Australian and New Zealand Standard Industrial Classification (ANZSIC), a detailed description of which appears in *ANZSIC 1993* (1292.0). Like the previous Australian Standard Industrial Classification (ASIC), ANZSIC classifies businesses according to their economic activities, in a structure consisting of 4 levels (Division, Sub-division, Group and Class). Labour Force Survey data are coded at the Group level, as was the practice under ASIC. To enable the conversion of historical data from ASIC to ANZSIC for the period November 1984 to May 1994, a concordance was published in the August 1994 issue of *Labour Force, Australia* (6203.0) and in the Information Paper: *Labour Force Survey: Introduction of ANZSIC for Industry data (Replacement publication)* (6259.0). It has been found that the concordance, which was based on preliminary investigations, did not provide the most appropriate conversion for certain Group level industries. An improved concordance has now been applied to historical Labour Force Survey estimates. This concordance was published in the Appendix to the May 1996 issue of *Labour Force, Australia* (6203.0) and in a further issue of the above Information Paper.

STATUS IN EMPLOYMENT

54 From August 1994, the Labour Force Survey has adopted the International Classification of *Status in employment* (ICSE-93) in place of the previous term *Status of worker*. No definitional changes have been made, the only changes are to the classification titles which are as follows: Employer remains Employer, Wage and salary earner becomes Employee, Self-employed becomes Own account worker and Unpaid family helper becomes Contributing family worker.

OCCUPATION

55 From August 1996, Labour Force Survey occupation data are classified according to the Australian Standard Classification of Occupations (ASCO) Second Edition, a detailed description of which appears in *ASCO - Australian Standard Classification of Occupations, Information Paper* (1221.0). The new version of the classification replaces ASCO First Edition, which was adopted in the survey in August 1986. Like the previous ASCO First Edition, ASCO Second Edition is a skill-based classification of occupations. However, the structure of ASCO Second Edition comprises 5 hierarchical levels (Major Group, Sub-Major Group, Minor Group, Unit Group and Occupation) compared with 4 levels in ASCO First Edition (Major Group, Minor Group, Unit Group and Occupation). Labour Force Survey data are coded to the Unit Group level, as was the practice under ASCO First Edition.

RELATED PUBLICATIONS

56 Users may also wish to refer to the following publications which relate to the labour force and are available on request:

Labour Statistics, Australia (6101.0) (annual)

A Guide to Labour Statistics, Australia (6102.0) (irregular)

Labour Force, New South Wales (6201.1) (quarterly)

Labour Force, Queensland (6201.3) (quarterly)

Labour Force, Australia, Preliminary (6202.0) (monthly)

Labour Force, Australia (6203.0) (monthly)

Labour Force, Australia, 1978-1995 (6204.0) (irregular)

Labour Force Projections, Australia (6260.0) (irregular)

Australian Labour Market (6284.0) (annual)

Information Papers

Questionnaires Used in the Labour Force Survey (6232.0) (irregular)

Regional Labour Force Statistics (6262.0) (irregular)

Labour Force Survey Sample Design (6269.0) (irregular)

Labour Force Survey - Measuring Teenage Unemployment (6270.0) (irregular)

Measuring Employment and Unemployment (6279.0) (irregular)

57 Current publications produced by the ABS are listed in the *Catalogue of Publications and Products, Australia* (1101.0). The ABS also issues, on Tuesdays and Fridays, a *Release Advice* (1105.0) which lists publications to be released in the next few days. The Catalogue and Release Advice are available from any ABS office.

UNPUBLISHED STATISTICS

58 The ABS can also make available information which is not published. This information is available on a number of media such as floppy disk, microfiche and customised reports. In general, a charge is made for providing unpublished information. Inquiries should be made to any ABS office.

ROUNDING

59 Estimates have been rounded and discrepancies may occur between sums of the component items and totals.

SYMBOLS AND OTHER USAGES

.. not applicable

* subject to sampling variability too high for most practical uses. See paragraphs 34 and 35.

STUART JACKSON

REGIONAL DIRECTOR, VICTORIA

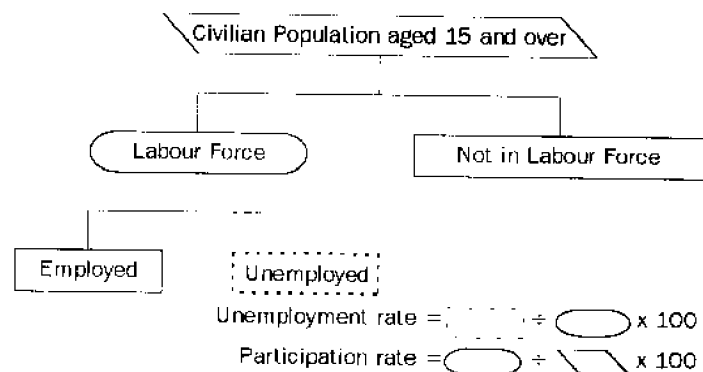
GLOSSARY

Dependants	All family members under 15 years of age; all sons or daughters aged 15 to 19 attending school or aged 15 to 24 attending a tertiary educational institution full-time (except those classified as husbands, wives or lone parents).
Dependent student	In couple or one-parent families, sons or daughters aged 15 to 19 attending school or aged 15 to 24 attending a tertiary educational institution full-time (except those classified as husbands, wives or lone parents).
Employed	Persons aged 15 years and over who, during the reference week: <ul style="list-style-type: none">■ worked for one hour or more for pay, profit, commission, or payment in kind in a job or business, or on a farm (comprising employees, employers, and own account workers); or■ worked for one hour or more without pay in a family business or on a farm (i.e. contributing family worker); or■ were employees who had a job but were not at work and were: on paid leave; on leave without pay for less than four weeks up to the end of the reference week; stood down without pay because of bad weather or plant breakdown at their place of employment for less than four weeks up to the end of the reference week; on strike or locked out; on workers' compensation and expected to be returning to their job; or receiving wages or salary while undertaking full-time study; or■ were employers, own account workers or contributing family workers who had a job, business, or farm, but were not at work.
Full-time workers	Employed persons who usually worked 35 hours or more a week (in all jobs) and others who, although usually working less than 35 hours a week, worked 35 hours or more during the reference week.
Hours worked	The figures of aggregate hours and average hours refer to actual hours worked during the reference week, not hours paid for.
Household	A group of one or more persons in a private dwelling who consider themselves to be separate from other persons (if any) in the dwelling, and who make regular provision to take meals separately from other persons, i.e. at different times or in different rooms. Lodgers who receive accommodation but not meals are treated as separate households. Boarders who receive both accommodation and meals are not treated as separate households. A household may consist of any number of families and non-family members.
Industry	From August 1994, classified according to the <i>Australian and New Zealand Standard Industrial Classification (ANZSIC), 1993 (1292.0)</i> .
Labour force	For any group, persons who were employed or unemployed, as defined.
Lone parent	The head of a one-parent family.
Lone person	A person who is the sole member of a household.
Marital status	Persons are classified as married (husband and wife) if they are reported as being married (including de facto) and their spouse was a usual resident of the household at the time of the survey. The not-married category comprises persons who have never married, or are separated.

widowed or divorced as well as those who although reported as being married, did not have a spouse who usually lived in the household.

Non-dependent child	In couple or one-parent families, sons or daughters aged 15 or over not attending school or a tertiary educational institution full-time (except those classified as husbands, wives or lone parents).
Non-family member	A person who is not related to any other member of the household in which they are living.
Not in the labour force	Persons who were not in the categories employed or unemployed, as defined.
Occupation	From August 1996, classified according to the Australian Standard Classification of Occupations (ASCO) Second Edition.
Participation rate	For any group, the labour force expressed as a percentage of the civilian population aged 15 years and over in the same group.
Part-time workers	Employed persons who usually worked less than 35 hours a week and who did so during the reference week.
Status in employment	Employed persons classified by whether they were Employers, Own account workers, Employees, or Contributing family workers.
Unemployed	Persons aged 15 years and over who were not employed during the reference week, and: <ul style="list-style-type: none"> ■ had actively looked for full-time or part-time work at any time in the four weeks up to the end of the reference week and; ■ were available for work in the reference week, or would have been available except for temporary illness (i.e. lasting for less than four weeks to the end of the reference week); or ■ were waiting to start a new job within four weeks from the end of the reference week and would have started in the reference week if the job had been available then; or ■ were waiting to be called back to a full-time or part-time job from which they had been stood down without pay for less than four weeks up to the end of the reference week (including the whole of the reference week) for reasons other than bad weather or plant breakdown.
Unemployment rate	For any group, the number of unemployed persons expressed as a percentage of the labour force in the same group.

The Labour Force framework, showing the derivation of Unemployment and Participation rates.



A STANDARD ERRORS OF ESTIMATES, VICTORIAN LABOUR FORCE REGIONS, FROM SEPTEMBER 1992

Size of estimate	Victoria;										South Eastern				Loddon-Campaspe-Mallee; Goulburn-Ovens-Murray				
	Melbourne					Outer Melbourne					Melbourne		Melbourne		Gippsland		All		
	North Western		Inner		North Eastern	Inner		Southern		Outer Eastern	Outer Mornington Peninsula	Western District	Highlands Wimmera	Central	All	Gippsland	All	Gippsland	
MSR	MSR	MSR	MSR	MSR	MSR	MSR	MSR	MSR	MSR	MSR	MSR	MSR	MSR	MSR	MSR	MSR	MSR	MSR	
300	290	230	230	250	250	240	270	260	270	250	270	270	290	290	290	270	270	270	
500	380	300	300	330	330	310	350	330	350	320	350	350	370	370	370	350	350	350	
700	450	360	350	390	390	370	420	400	420	380	420	420	440	440	440	420	420	420	
1 000	540	430	420	460	460	440	500	480	500	450	500	500	530	530	530	500	500	500	
1 500	670	530	520	570	570	550	620	590	620	560	610	610	660	660	650	610	610	610	
2 000	770	610	600	660	660	630	720	680	720	640	710	710	760	760	760	710	710	710	
2 500	860	690	680	740	740	710	810	760	810	720	800	800	850	850	850	800	800	800	
3 000	940	750	740	810	810	780	890	830	890	790	880	880	940	940	930	880	880	880	
4 000	1 100	870	860	940	940	900	1 050	970	1 050	920	1 000	1 000	1 100	1 100	1 100	1 000	1 000	1 000	
5 000	1 200	980	970	1 050	1 050	1 000	1 150	1 100	1 150	1 050	1 150	1 150	1 200	1 200	1 200	1 150	1 150	1 150	
7 000	1 400	1 150	1 150	1 250	1 250	1 200	1 350	1 300	1 350	1 250	1 350	1 350	1 450	1 450	1 450	1 350	1 350	1 350	
10 000	1 650	1 400	1 400	1 500	1 500	1 450	1 650	1 550	1 650	1 500	1 650	1 650	1 750	1 750	1 750	1 650	1 650	1 650	
15 000	2 000	1 750	1 700	1 850	1 850	1 800	2 350	2 250	2 350	2 100	2 350	2 350	2 500	2 500	2 500	2 350	2 350	2 350	
20 000	2 250	2 000	2 000	2 150	2 150	2 100	2 350	2 250	2 350	2 100	2 350	2 350	2 500	2 500	2 500	2 350	2 350	2 350	
30 000	2 700	2 500	2 450	2 700	2 700	2 550	2 900	2 750	2 900	2 600	2 900	2 900	3 100	3 100	3 050	2 900	2 900	2 900	
50 000	3 300	3 250	3 200	3 500	3 500	3 350	3 800	3 600	3 800	3 450	3 800	3 800	4 050	4 050	4 000	3 800	3 800	3 800	
70 000	3 800	3 900	3 850	4 200	4 200	4 000	4 550	4 300	4 550	4 100	4 500	4 500	4 850	4 850	4 800	4 500	4 500	4 500	
100 000	4 400	4 700	4 650	5 100	5 100	4 850	5 500	5 200	5 500	4 950	5 500	5 500	5 800	5 800	5 800	5 500	5 500	5 500	
150 000	5 200	5 800	5 700	6 300	6 300	6 000	6 800	6 400	6 800	6 100	6 800	6 800	7 200	7 200	7 200	6 800	6 800	6 800	
200 000	5 800	6 800	6 700	7 300	7 300	7 000	8 000	7 500	8 000	7 100	7 900	7 900	8 400	8 400	8 400	7 900	7 900	7 900	
300 000	6 700	8 400	8 300	9 100	9 100	8 700	9 900	9 300	9 900	8 900	9 800	9 800	10 400	10 400	10 400	9 800	9 800	9 800	
500 000	8 100	11 100	10 900	11 190	11 190	11 400	13 000	12 300	13 000	11 700	12 900	12 900	13 700	13 700	13 600	12 900	12 900	12 900	
1 000 000	10 400																		
2 000 000	13 100																		
5 000 000	17 600																		
25% RSE	4 600	3 000	2 900	3 500	3 500	3 200	4 200	3 700	4 200	3 400	4 100	4 100	4 700	4 700	4 700	4 200	4 200	4 200	4 200

MSR = Major Statistical Region
RSE = Relative Standard Error

B STANDARD ERRORS OF ESTIMATES OF MONTHLY MOVEMENTS, VICTORIAN LABOUR FORCE REGIONS, FROM JANUARY 1993

Size of larger estimate	Victoria;														Loddon-Campaspe-Mallee; Goulburn-Ovens Murray	
	Melbourne MSR;													South Eastern Melbourne; Mornington Peninsula		
	Balance of Victoria MSR	North Western Melbourne	Outer Western Melbourne	Inner Melbourne	North Eastern Melbourne	Inner Eastern Melbourne	Southern Melbourne	Outer Eastern Melbourne	Barwon-Western District	Central Highlands-Wimmera	All Gippsland					
300	380	170	210	220	200	210	210	210	210	210	210	210	210	210	230	230
500	460	220	260	270	250	270	260	260	260	260	260	260	260	260	280	280
700	510	250	300	310	290	310	300	300	300	300	300	300	300	300	330	330
1 000	590	290	350	370	340	360	350	350	350	350	350	350	350	350	380	380
1 500	680	350	420	440	400	430	420	420	420	420	420	420	420	420	460	460
2 000	760	390	470	500	460	490	480	480	480	480	480	480	480	470	520	520
2 500	820	430	520	550	500	540	520	520	520	520	520	520	520	520	570	570
3 000	880	470	560	590	540	580	570	570	570	570	570	570	570	570	620	620
4 000	980	530	640	670	620	660	640	640	640	640	640	640	640	640	700	700
5 000	1 050	580	700	740	680	730	710	710	710	710	710	710	710	710	770	770
7 000	1 200	680	820	850	790	840	820	820	820	820	820	820	820	810	890	890
10 000	1 350	790	950	1 000	920	980	960	960	960	960	960	960	960	950	1 100	1 100
15 000	1 600	940	1 150	1 200	1 100	1 150	1 150	1 150	1 150	1 150	1 150	1 150	1 150	1 150	1 300	1 300
20 000	1 750	1 050	1 300	1 350	1 250	1 350	1 300	1 300	1 300	1 300	1 300	1 300	1 300	1 300	1 450	1 450
30 000	2 050	1 250	1 550	1 600	1 500	1 600	1 550	1 550	1 550	1 550	1 550	1 550	1 550	1 500	1 750	1 750
50 000	2 450	1 600	1 900	2 000	1 850	1 950	1 900	1 900	1 900	1 900	1 900	1 900	1 900	1 900	2 200	2 200
70 000	2 800	1 850	2 200	2 300	2 150	2 300	2 250	2 250	2 250	2 250	2 250	2 250	2 250	2 200	2 550	2 550
100 000	3 200	2 150	2 600	2 700	2 500	2 650	2 600	2 600	2 600	2 600	2 600	2 600	2 600	2 550	2 950	2 950
150 000	3 700	2 550	3 100	3 200	2 950	3 200	3 100	3 100	3 100	3 100	3 100	3 100	3 100	3 050	3 550	3 550
200 000	4 100	2 900	3 500	3 650	3 350	3 600	3 500	3 500	3 500	3 500	3 500	3 500	3 500	3 450	4 000	4 000
300 000	4 800	3 450	4 150	4 350	4 000	4 300	4 200	4 200	4 200	4 200	4 200	4 200	4 200	4 150	4 800	4 800
500 000	5 800	4 300	5 200	5 400	5 000	5 400	5 200	5 200	5 200	5 200	5 200	5 200	5 200	5 200	6 000	6 000
1 000 000	7 400															
2 000 000	9 600															
5 000 000	13 400															

MSR - Major Statistical Region

NOTE: When comparing quarterly movements multiply standard error by 1.1
When comparing annual movements multiply standard error by 1.3

C

25% RELATIVE STANDARD ERROR CUTOFF LEVELS, STATES AND AUSTRALIA, FROM SEPTEMBER 1992

Region	Person estimates	Hours worked	Average hours worked	Average duration of unemployment	Median duration of unemployment
New South Wales	5 300	7 400	2 700	8 600	18 800
Victoria	4 600	6 500	2 300	7 500	16 500
Queensland	3 500	5 000	1 800	5 800	12 600
South Australia	2 400	3 400	1 300	4 000	8 600
Western Australia	2 900	4 000	1 500	4 600	9 900
Tasmania	1 300	1 800	700	2 100	4 400
Northern Territory	1 300	1 800	700	2 100	4 700
Australian Capital Territory	1 000	1 300	500	1 500	3 200
Australia	4 000	5 700	1 900	6 800	15 800
Standard error factor	..	1.2	0.7	1.3	2.0

NOTE: Relative standard errors of hours worked, average hours worked, average duration of unemployment and median duration of unemployment are obtained by first finding the relative standard error of the total number of persons contributing to the estimate (from Table A) and then multiplying that figure by the listed standard error factor.

SUPPLEMENTARY AND SPECIAL SURVEYS

The supplementary and special surveys collect data on particular aspects of the labour force. The following is an historical list of supplementary and special labour force surveys. The data are available in publication form, by subscription or on request. It may be possible to order unpublished data on the following supplementary and special surveys by contacting the ABS.

Title of Survey	Catalogue No./ Product No.
Career Experience, Australia. Irregular. First and latest issue February 1993	6254.0
Career Paths of Persons with Trade Qualifications, Australia. Irregular. Latest issue 1993	6243.0
Child Care, Australia. Irregular. Latest issue March 1996	4402.0
Employment Benefits, Australia. Irregular. Latest issue August 1994	6334.0.40.001
Job Search Experience of Unemployed Persons, Australia. Annual. Latest issue July 1996	6222.0
Labour Force Experience, Australia. Two-yearly. Latest issue February 1995	6206.0.40.001
Labour Force Status and Educational Attainment, Australia. Final issue February 1994	6235.0
Labour Force Status and Other Characteristics of Families, Australia. Annual. Latest issue June 1996	6224.0
Labour Force Status and Other Characteristics of Migrants, Australia. Irregular. Latest issue September 1993	6250.0
Labour Mobility, Australia. Two-yearly. Latest issue February 1996	6209.0
Multiple Jobholding, Australia. Irregular. Latest issue August 1994	6216.0.40.001
Participation in Education, Australia. Annual. Latest issue September 1995	6272.0
Persons Employed at Home, Australia. Irregular. Latest issue September 1995	6275.0
Persons Not in the Labour Force, Australia. Annual. Latest issue September 1996	6220.0
Persons Who Had Re-entered the Labour Force, Australia. Three-yearly. Latest issue July 1995	6264.0.40.001
Persons Who Have Left the Labour Force, Australia. Irregular. Latest issue September 1994	6267.0.40.001
Retirement and Retirement Intentions, Australia. Three-yearly. Latest issue November 1994	6238.0.40.001
Successful and Unsuccessful Job Search Experience, Australia. Two-yearly. Latest issue July 1996	6245.0
Superannuation, Australia. Irregular. Latest issue November 1995	6319.0
Trade Union Members, Australia. Two-yearly. Latest issue August 1996	6325.0
Training and Education Experience, Australia. Irregular. Latest issue 1993	6278.0
Transition from Education to Work, Australia. Annual. Latest issue May 1996	6227.0
Underemployed Workers, Australia. Annual. Latest issue September 1996	6265.0
Weekly Earnings of Employees (Distribution), Australia. Annual. Latest issue August 1995	6310.0.40.001
Working Arrangements, Australia. Irregular. Latest issue August 1995	6342.0.40.001

STATISTICAL LOCAL AREA (SLA) COMPOSITION OF STATISTICAL REGIONS, VICTORIA, FROM SEPTEMBER 1992

Melbourne MSR

Outer Western Melbourne SR

Altona (C)
Essendon (C)
Footscray (C)
Keilor (C)
Melton (S)
Sunshine (C)
Werribee (C)
Williamstown (C)

North Western Melbourne SR

Broadmeadows (C)
Brunswick (C)
Bulla (S)
Coburg (C)

Inner Melbourne SR

Collingwood (C)
Fitzroy (C)
Melbourne (C)
Inner Remainder
Port Melbourne (C)
Prahran (C)
Richmond (C)
St Kilda (C)
South Melbourne (C)

North Eastern Melbourne SR

Diamond Valley (S)
Eltham (S)
Heidelberg (C)
Northcote (C)
Preston (C)
Whittlesea (C)

Inner Eastern Melbourne SR

Box Hill (C)
Camberwell (C)
Doncaster and Templestowe (C)
Hawthorn (C)
Kew (C)
Waverley (C)

Southern Melbourne SR

Brighton (C)
Caulfield (C)
Malvern (C)
Moorabbin (C)
Mordialloc (C)
Oakleigh (C)
Sandringham (C)

Outer Eastern Melbourne SR

Croydon (C)
Healesville (S)
Knox (C)
Lillydale (S)
Nunawading (C)

Ringwood (C)
Sherbrooke (S)
Upper Yarra (S) (Pt A)

South Eastern Melbourne SR

Berwick (C)
Cranbourne (S)
Dandenong (C)
Pakenham (S)
Springvale (C)

Mornington Peninsula SR

Chelsea (C)
Flinders (S)
Frankston (C)
Hastings (S)
Mornington (S)

Balance of Victoria MSR

Barwon-Western District SR

Bannockburn (S) (Pt A & B)
Barrabool (S) (Pt A & B)
Belfast (S)
Bellarine (RC) (Pt A & B)
Camperdown (T)
Colac (C)
Colac (S)
Corio (S) (Pt A & B)
Dundas (S)
Geelong (C)
Geelong West (C)
Glenelg (S)
Hamilton (C)
Hampden (S)
Heytesbury (S)
Heywood (S)
Lady Julia Percy & Towerhill
Leigh (S)
Minhamite (S)
Mortlake (S)
Mount Rouse (S)
Newtown (C)
Orway (S)
Port Fairy (B)
Portland (C)
Queenscliffe (B)
South Barwon (C) (Pt A & B)
Wannon (S)
Warrnambool (C)
Warrnambool (S)
Winchelsea (S)

Central Highlands -Wimmera SR

Arapiles (S)
Ararat (C)
Ararat (S)
Avoca (S)
Bacchus Marsh (S)
Ballarat (C)
Ballan (S)
Ballarat (S) (Pt A & B)

Bungaree (S) (Pt A & B)
Buninyong (S) (Pt A & B)
Creswick (S)
Daylesford & Glenlyon (S)
Dimboola (S)
Donald (S)
Dunmunkle (S)
Grenville (S) (Pt A & B)
Horsham (C)
Kariva (S)
Kara Kara (S)
Kowree (S)
Lexton (S)
Lowan (S)
Ripon (S)
St Arnaud (T)
Sebastopol (B)
Stawell (C)
Stawell (S)
Talbot & Clunes (S)
Warracknabeal (S)
Wimmera (S)

Loddon-Campaspe-Mallee SR

Bendigo (C)
Bet Bet (S)
Birchip (S)
Castlemaine (C)
Charlton (S)
Cohuna (S)
Eaglehawk (B)
East Loddon (S)
Echuca (C)
Gisborne (S)
Gordon (S)
Huntley (S) (Pt A & B)
Karkaroc (S)
Kerang (B)
Kerang (S)
Korong (S)
Kyneton (S)
Melvor (S)
Maldon (S)
Marong (RC) (Pt A & B)
Maryborough (C)
Metcalf (S)
Mildura (C)
Mildura (S) (Pt A & B)
Newham & Woodend (S)
Newstead (S)
Pyalong (S)
Rochester (S)
Romsey (S)
Strathfieldsaye (S) (Pt A & B)
Swan Hill (C)
Swan Hill (S)
Tullaroop (S)
Walpeup (S)
Whycheproof (S)

Goulburn-Ovens-Murray SR

Alexandra (S)
Beechworth (S)
Benalla (C)
Benalla (S)

Bright (S)
Broadford (S)
Chiltern (S)
Cobram (S)
Deakin (S)
Euroa (S)
Goulburn (S)
Kilmore (S)
Kyabram (T)
Mansfield (S)
Myrtleford (S)
Nathalia (S)
Numurkah (S)
Oxley (S)
Rodney (S) (Pt A & B)
Rutherglen (S)
Seymour (S)
Shepparton (C)
Shepparton (S) (Pt A & B)
Tallangatta (S) (Pt A & B)
Tungamah (S)
Upper Murray (S)
Violet Town (S)
Wangaratta (C)
Wangaratta (S)
Waranga (S)
Wodonga (RC)
Yackandandah (S)
Yarrowonga (S)
Yea (S)

All Gippsland SR

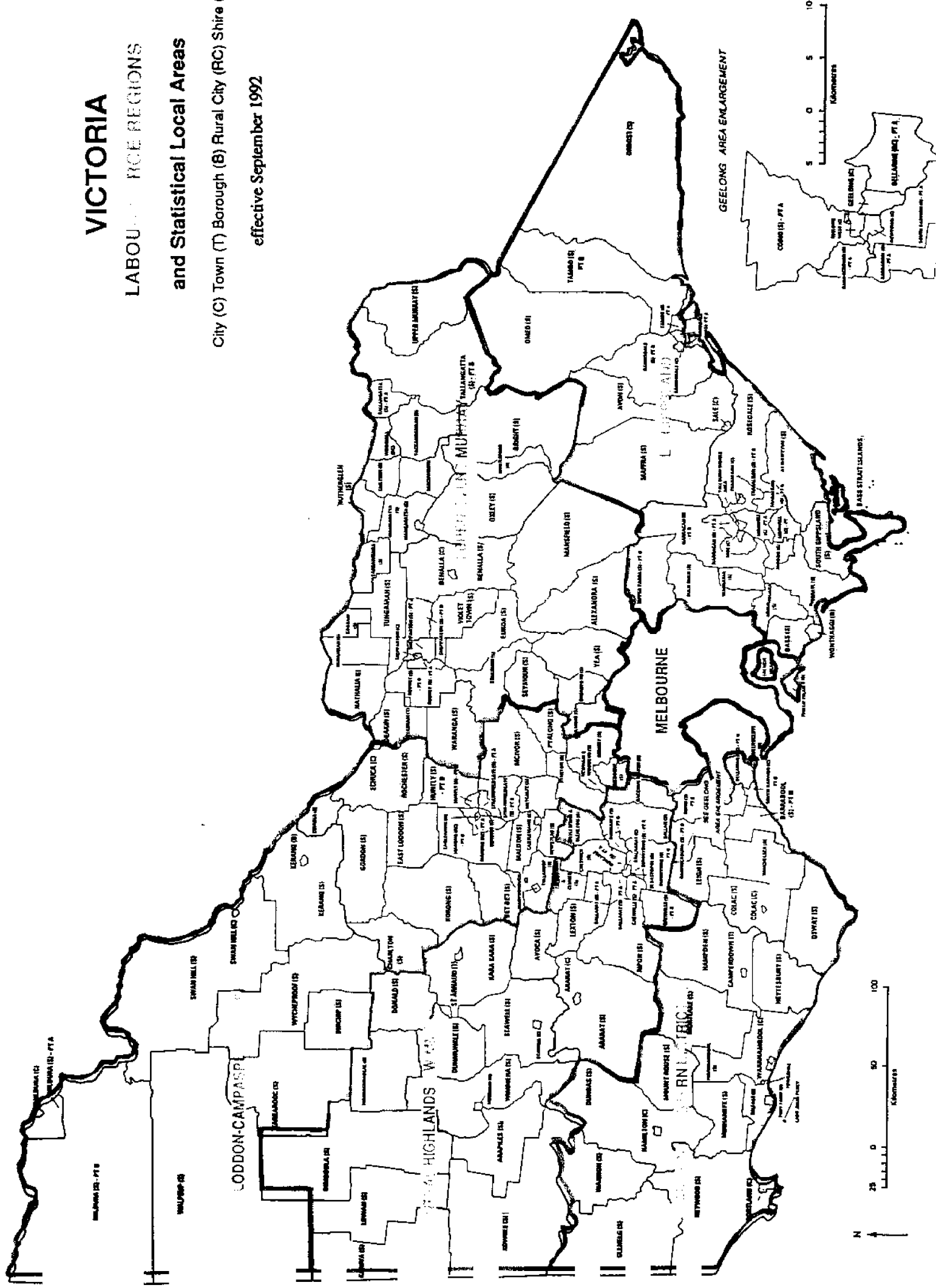
Alberton (S)
Avon (S)
Bairnsdale (C)
Bairnsdale (S) (Pt A & B)
Bass (S)
Bass Strait Islands
Buln Buln (S)
French Island
Korumburra (S)
Maffra (S)
Mirboo (S)
Moe (C)
Morwell (C) (Pt A & B)
Narracan (S) (Pt A & B)
Off Shore Areas & Migratory
Omeo (S)
Orbost (S)
Phillip Island (S)
Rosedale (S)
Sale (C)
South Gippsland (S)
Tambo (S) (Pt A & B)
Traralgon (C)
Traralgon (S) (Pt A & B)
Upper Yarra (S) (Pt B)
Warragul (S)
Wonthaggi (B)
Woorayl (S)
Yallourn Works Area

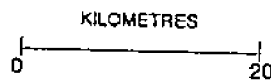
VICTORIA

LABOUR COUNCIL OF AUSTRALIA RICE REGIONS

and Statistical Local Areas

City (C) Town (T) Borough (B) Rural City (RC) Shire (S)
effective September 1992

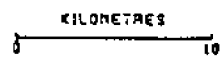
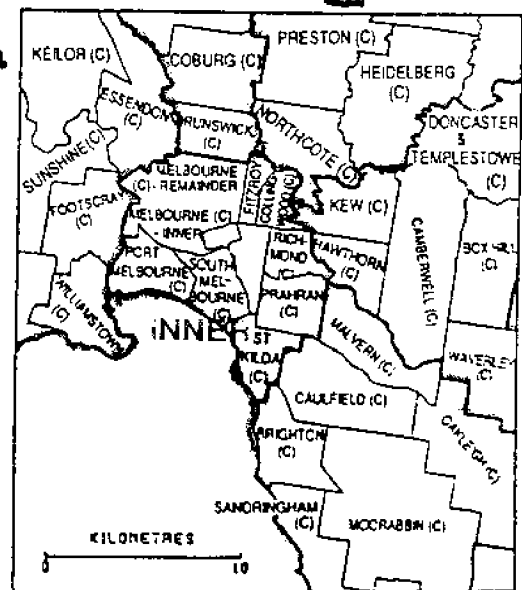




MELBOURNE MAJOR STATISTICAL REGION

Statistical Local Areas
LABOUR FORCE REGIONS

As at September 1992
City (C) Shire (S)



For more information . . .

The ABS publishes a wide range of statistics and other information on Australia's economic and social conditions. Details of what is available in various publications and other products can be found in the ABS Catalogue of Publications and Products available from all ABS Offices.

ABS Products and Services

Many standard products are available from ABS bookshops located in each State and Territory. In addition to these products, information tailored to the needs of clients can be obtained on a wide range of media by contacting your nearest ABS Office. The ABS also provides a Subscription Service for standard products and some tailored information services.

National Dial-a-Statistic Line

0055 86 400

Steadycom P/L: premium rate 25c/20 secs.

This number gives 24-hour access, 365 days a year, for a range of important economic statistics including the CPI.

Internet

<http://www.abs.gov.au>

A wide range of ABS information is available via the Internet, with basic statistics available for each State, Territory and Australia. We also have Key National Indicators, ABS product release details and other information of general interest.

Sales and Inquiries

Keylink STAT.INFO/ABS
X.400 (C:Australia,PUB:Telememo,O:ABS,FN:STAT,SN:INFO)
Internet stat.info@abs.telememo.au

National Mail Order Service (06) 252 5249
Subscription Service 1800 02 0608

	Information Inquiries	Bookshop Sales
SYDNEY	(02) 9268 4611	(02) 9268 4620
MELBOURNE	(03) 9615 7755	(03) 9615 7755
BRISBANE	(07) 3222 6351	(07) 3222 6350
PERTH	(09) 360 5140	(09) 360 5307
ADELAIDE	(08) 8237 7100	(08) 8237 7582
CANBERRA	(06) 252 6627	(06) 207 0326
HOBART	(03) 6222 5800	(03) 6222 5800
DARWIN	(08) 8943 2111	(08) 8943 2111



Client Services, ABS, PO Box 10, Belconnen ACT 2616

